

# Erasmus+ Online Linguistic Support

Make the most  
of your **Erasmus+**  
experience!



# Erasmus+: changing lives, opening minds



**Erasmus+** is aimed at boosting **skills** and **employability**, as well as modernising Education, Training and Youth work.

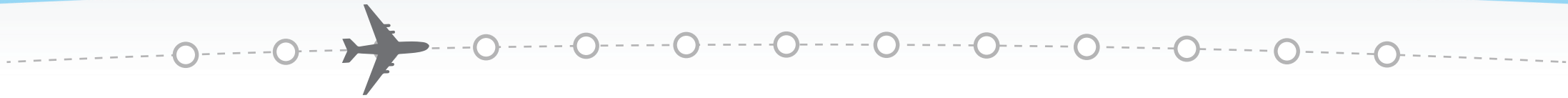
**Erasmus+** contributes to promoting **cooperation**, **diversity** and **multilingualism**.

# Erasmus+: learn anywhere



- With **4 MILLION participants** by 2020, Erasmus+ is a **unique opportunity** to study, train, gain work experience or volunteer abroad.

# Erasmus+ OLS: language learning for you



- As languages are the heart of **mutual understanding** and **comprehension**, it is essential to promote language learning for Erasmus+ mobility participants.

To support you, we have implemented the **Online Linguistic Support (OLS)**.



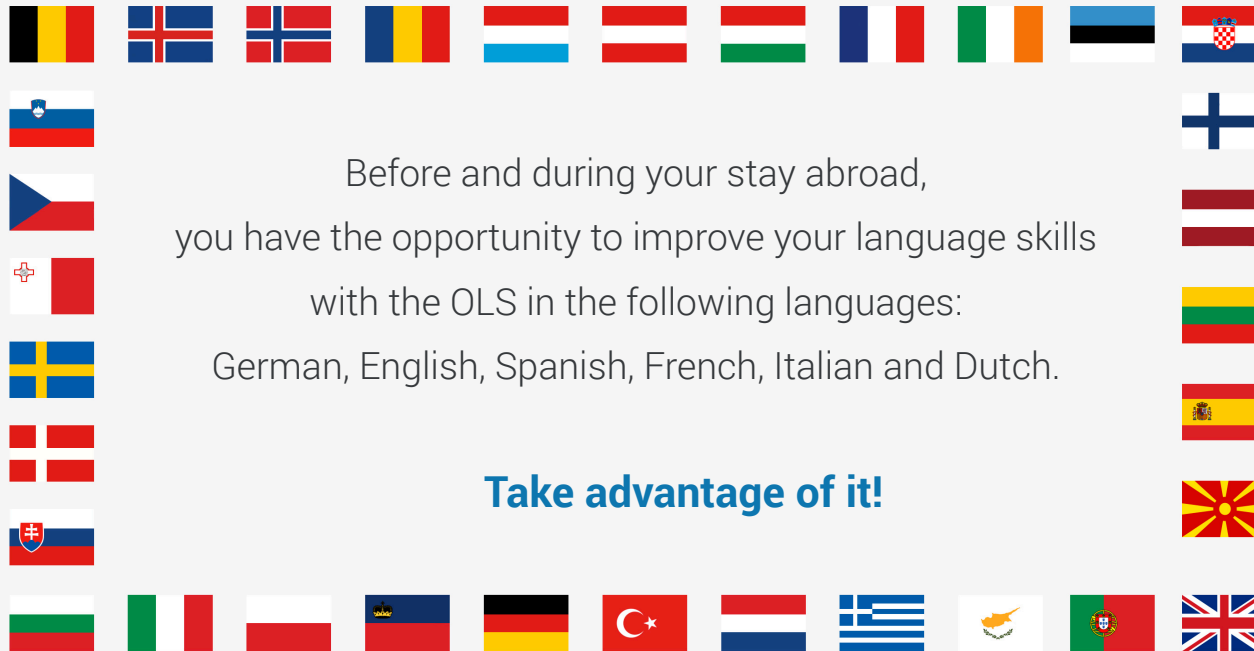
# Erasmus+ OLS language assessment: a unique opportunity



As a mobility participant, you have  
**the opportunity to assess and improve your skills**  
in the foreign language you will use  
to study, work or volunteer abroad.\*

\*The results of the OLS language assessment will not prevent you from taking part in the mobility.

# Erasmus+ OLS: languages



# The Erasmus+ OLS language assessment



## The OLS language assessment

is compulsory for Erasmus+ mobility participants with German, English, Spanish, French, Italian or Dutch as their main language of instruction, work or volunteering.<sup>1</sup>

If you are a higher education student, taking the OLS language assessment is a prerequisite to your mobility.<sup>2</sup>



**Before** their Erasmus+ mobility period

**At the end** of their Erasmus+ mobility period

<sup>1</sup> with the exception of native speakers

<sup>2</sup> except in duly justified cases

# Welcome to the Erasmus+ OLS!



1

**Once selected for Erasmus+**, you will receive an email with your personal credentials.



2

Log on to  
[www.erasmusplusols.eu](http://www.erasmusplusols.eu)



3

Take the OLS  
assessment!



# Check your language level!



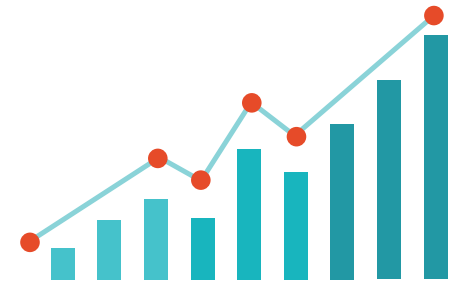
The Erasmus+ OLS language assessment



consists of **70 questions**

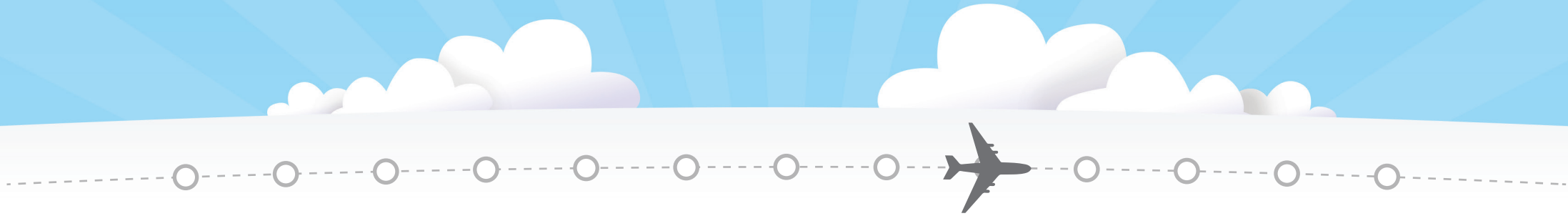


takes approximately  
**40 to 50 minutes**

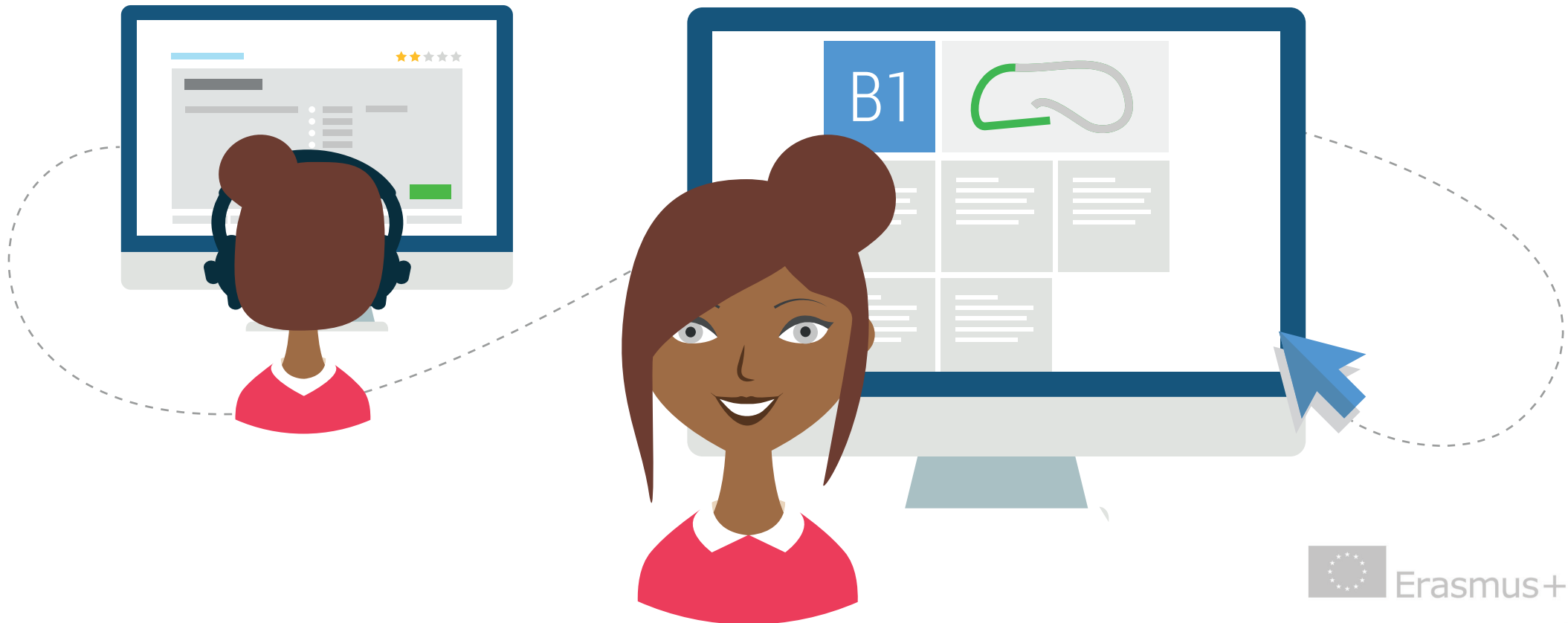


is **progressive** and **adapts**  
to your language level

# See your results instantly



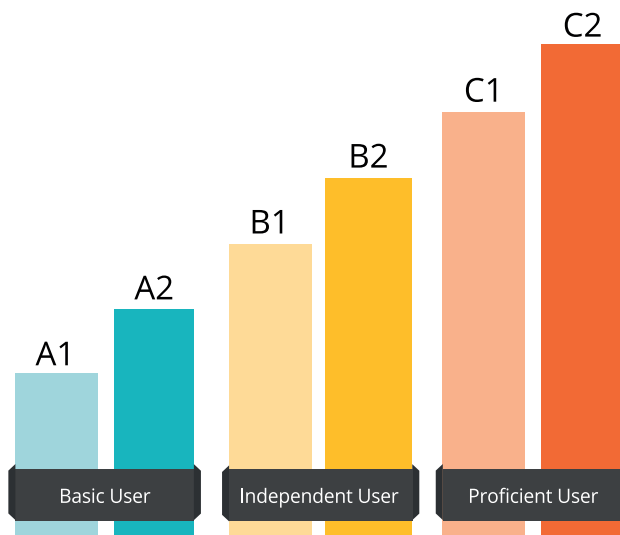
## Immediate results



# Find out your level for each of these skills!



➤ Determine your level in each of these skills, according to the **CEFR\***



## The assessment consists of

- ✔ **Grammar**  
(20 questions)
- ✔ **Vocabulary**  
(15 questions)
- ✔ **Key communicative phrases**  
(15 questions)
- ✔ **Listening comprehension**  
(10 questions)
- ✔ **Reading comprehension**  
(10 questions)

# What are the advantages for you?



A **detailed analysis of your language level**,  
in line with the CEFR



Your **evaluation record** as proof  
of your language skills



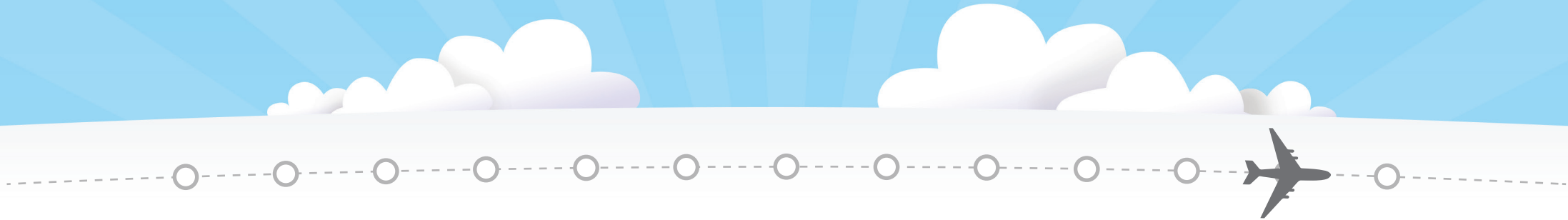
Take this opportunity to **create** or **update** your

- **Language Passport**
- **Europass**
- **Youthpass**



The opportunity to take an **OLS language course** and have access to forum,  
tutoring sessions and MOOCs to reach the recommended level.

# What happens next?



Your results will not prevent you from taking part in the Erasmus+ mobility. You can improve your language level by taking an **OLS language course.**



# The sooner, the better!



The OLS language assessment is **compulsory** for Erasmus+ mobility participants with German, English, Spanish, French, Italian or Dutch as their main language of instruction, work or volunteering, with the exception of native speakers.



If you are a higher education student, taking the OLS language assessment is a **prerequisite** to your mobility, except in duly justified cases.



Be careful not to miss the **deadline!**

# Erasmus+ Online Linguistic Support

**Make the most of this unique opportunity!**

**Enjoy your Erasmus+ experience abroad!**



**Erasmus+**

Online Linguistic Support