



LISTA LUCRĂRILOR PUBLICATE

Hirsch index: Web of Science Core Collection 4; Scopus 4; Google Scholar 7

a. Lucrări relevante pentru realizările profesionale:

1. **Andrei Asăndulesei**, Felix-Adrian Tencariu, Ionuț C. Nicu 2020 – *Pars pro toto—Remote Sensing Data for the Reconstruction of a Rounded Chalcolithic Site from NE Romania: The Case of Ripiceni–Holm Settlement (Cucuteni Culture)*, Remote Sensing 12, 5, 887, Web of Science, IF: 4.118;
2. Lucrețiu Mihailescu-Bîrliba, **Andrei Asăndulesei** 2019 – *Roman Army and Salt Exploitation in Dacia*, Journal of Ancient History and Archaeology, 6/3, 27-48, Web of Science, IF: N/A;
3. Ionuț C. Nicu, **Andrei Asăndulesei** 2018 – *GIS-based evaluation of diagnostic areas in landslide susceptibility analysis of Bahluiet River Basin (Moldavian Plateau, NE Romania). Are Neolithic sites in danger?*, Geomorphology, 314, 27-41, Web of Science, Impact Factor: 3.308;
4. **Andrei Asăndulesei** 2017 – *Inside a Cucuteni Settlement: Remote Sensing Techniques for Documenting an Unexplored Eneolithic Site from North-Eastern Romania*, Remote sensing, Special Issue: Archaeological Prospecting and Remote Sensing, 9, 41, Web of Science, IF: 4.118;
5. Alin Miha-Pintilie, **Andrei Asăndulesei**, Ionuț C. Nicu, Cristian Constantin Stoleriu, Gheorghe Romanescu 2016 – *Using GPR for assessing the volume of sediments from the largest natural dam lake of the Eastern Carpathians: Cuejdel Lake, Romania*, Environmental Earth Sciences, 75, 710, Web of Science, IF: 1.871;
6. **Andrei Asăndulesei** 2015 – *Geomagnetic prospecting on Chalcolithic sites in north-eastern Romania: some considerations regarding intra-site spatial organisation*, Archaeologia Polona, Special theme: Archaeological Prospection, 53, 189-194, ERIH Plus;
7. **Andrei Asăndulesei**, Ionuț C. Nicu, Radu Balaur, Ștefan Caliniuc, Mihaela Asăndulesei, Vasile Cotiugă 2015 – *Integrated prospection methods for documenting threatened prehistoric archaeological sites from north-eastern Romania*, Archaeologia Polona, Special theme: Archaeological Prospection, 53:425-430, ERIH Plus;
8. **Andrei Asăndulesei** 2014 – *Oblique Air Photography for Chalcolithic Sites from Eastern Romania. Analysis and Interpretation. Some Examples*, Studia Antiqua et Archaeologica XX, p. 69-89, Scopus;



9. **Andrei Asăndulesei**, Lăcrămioara-Elena Istina, Vasile Cotiuță, Felix-Adrian Tencariu, Ștefan Caliniuc, Radu Balaur, Ana-Petronela Crețu, Ionuț C. Nicu, Bogdan Venedict 2012 – *Cesium magnetometer survey in the Cucuteni settlement of Fulgeriș - La Trei Cireși, Bacău County, Romania*, Romanian Reports in Physics, 64, 3, Web of Science, IF: 1.940;
10. Gheorghe Romanescu, Vasile Cotiuță, **Andrei Asăndulesei**, Cristian Constantin Stoleriu 2012 – *Use of the 3-D scanner in mapping and monitoring the dynamic degradation of soils: case study of the Cucuteni-Baiceni Gully on the Moldavian Plateau (Romania)*, Hydrology and Earth System Sciences, 16, 953–966, Web of Science, IF: 4.936.

c. Cărți și capitole în cărți

c.1. Cărți:

- **Andrei Asăndulesei**, *GIS (Geographic Information System), fotogrametrie și geofizică în arheologie. Investigații non-invasive în așezări Cucuteni din România*, Editura Universității „Al. I. Cuza” din Iași, 2015.

c.2. Capitole de cărți:

- Alexandra Bivolaru, Matthieu Giaime, Valentin Bottez, **Andrei Asăndulesei**, Christophe Morhange 2018 – *Istros (Black Sea coast, Romania) - A geoarchaeological perspective regarding harbour(s) location*, in Harbours and Maritime Cultural Landscapes, (eds. Lucy Blue, Dorit Siven, Helen Farr, Kalliopi Baika, David Blackman), sub tipar;
- Brigand Robin, Weller Olivier, Tencariu Felix-Adrian, Alexianu Marius, **Asăndulesei Andrei** 2018 – *Ovine pastoralism and mobility systems in Romania: An ethnoarchaeological approach*, in Historical Archaeologies of Transhumance across Europe, (eds. Costello, E., Svensson, E.), Taylor and Francis, 245-263, DOI: 10.4324/9781351213394;
- Diana-Măriuca Vornicu, George Bodi, **Andrei Asăndulesei**, Felix-Adrian Tencariu 2018 – *Recent Investigations in the Chalcolithic Settlement of Războieni – Dealul Boghiu*, in Materiality and Identity in Pre- And Protohistoric Europe. Homage to Cornelia-Magda Lazarovici, (Eds. Senica Țurcanu, Constantin-Emil Ursu), Editura Karl A. Romstorfer, Suceava, 367-395;
- Jörg W.E. Fassbinder, **Andrei Asăndulesei**, Marion Scheiblecker 2018 – *The Dinka Settlement Complex 2017: The Final Season at Gird-i Bazar and First Work in the Lower Town*, in Peshdar Plain Project Publications 3, (eds. Karen Radner, Janoscha Kreppner, Andrea Squitieri), Gladbeck: PeWe-Verlag, 20-30, DOI: <https://doi.org/10.5282/ubm/epub.57255>;
- Marius Alexianu, Felix-Adrian Tencariu, **Andrei Asăndulesei**, Olivier Weller, Robin Brigand, Ion Sandu, Gheorghe Romanescu, Roxana-Gabriela Curcă,



Ștefan Caliniuc, Mihaela Asăndulesei 2015 – *The Salt from the Alghianu Beck (Vrancea County, Romania): A Multifaceted Ethnoarchaeological Approach*, in: R. Brigand and O. Weller (eds.), *Archaeology of salt: approaching an invisible past*, Leiden, Sidestone. ISBN 9789088903038 (38 intrări KVK);

- **Andrei Asăndulesei**, Felix-Adrian Tencariu, Sergiu-Constantin Enea, Dumitru Boghian 2013 – *Topographic surveys and geophysical investigations in prehistoric settlement from Tăcuta, Dealul Miclea. An integrated GIS based approach*, in *Semper fidelis: in honorem magistri Mircea Ignat*, (eds. Bogdan-Petru Niculică, Dumitru Boghian), Istros Publishing House, Brăila, 65-78;
- **Andrei Asăndulesei**, Felix-Adrian Tencariu, Vasile Cotiugă 2011 – *L'utilisation des méthodes non-invasives dans la recherche archéologique. Applications de la magnétométrie au césium sur les sites Gumelnița de Dobroudja*, in *Société et environnement dans la zone du Bas Danube durant le 5ème millénaire avant notre ère*, (eds. Laurent Carozza, Cătălin Bem, Cristian Micu), Editura Universității „Al. I. Cuza” din Iași, Iași – București, 115-130.

d. Articole/Studii publicate in extenso în reviste din circuitul științific internațional, separat ISI

d.1. Articole ISI:

- **Andrei Asăndulesei**, Tencariu Felix A., Nicu Ionuț C. 2020 – *Pars pro toto— Remote Sensing Data for the Reconstruction of a Rounded Chalcolithic Site from NE Romania: The Case of Ripiceni–Holm Settlement (Cucuteni Culture)*, *Remote Sensing* 12, 5, 887, Web of Science, IF: 4.118;
- Lucrețiu Mihailescu-Birliba, **Andrei Asăndulesei** 2019 – *Roman Army and Salt Exploitation in Dacia*, *Journal of Ancient History and Archaeology*, 6/3, 27-48, Web of Science, IF: N/A;
- Nicu Ionu Cristi, **Andrei Asăndulesei** 2018 – *GIS-based evaluation of diagnostic areas in landslide susceptibility analysis of Bahluiet River Basin (Moldavian Plateau, NE Romania). Are Neolithic sites in danger?* *Geomorphology*, 314, 27-41, Web of Science, Impact Factor: 3.308;
- **Andrei Asăndulesei** 2017 – *Inside a Cucuteni Settlement: Remote Sensing Techniques for Documenting an Unexplored Eneolithic Site from North-Eastern Romania*, *Remote sensing, Special Issue: Archaeological Prospecting and Remote Sensing*, 9, 41, Web of Science, IF: 4.118;
- Alin Mihu-Pintilie, **Andrei Asăndulesei**, Ionuț Cristu Nicu, Cristian Constantin Stoleriu, Gheorghe Romanescu 2016 – *Using GPR for assessing the volume of sediments from the largest natural dam lake of the Eastern Carpathians: Cuejdel Lake, Romania*, *Environmental Earth Sciences*, 75, 710, Web of Science, IF: 1.871;



- **Andrei Asăndulesei**, Lăcrămioara-Elena Istina, Vasile Cotiuță, Felix-Adrian Tencariu, Ștefan Caliniuc, Radu Balaur, Ana-Petronela Crețu, Cristi Nicu, Bogdan Venedict 2012 – *Cesium magnetometer survey in the Cucuteni settlement of Fulgeriș - La Trei Cireși, Bacău County, Romania*, Romanian Reports in Physics, 64, 3, Web of Science, IF: 1.940;
- Gheorghe Romanescu, Vasile Cotiuță, **Andrei Asăndulesei**, Cristian Constantin Stoleriu 2012 – *Use of the 3-D scanner in mapping and monitoring the dynamic degradation of soils: case study of the Cucuteni-Baiceni Gully on the Moldavian Plateau (Romania)*, Hydrology and Earth System Sciences, 16, 953–966, Web of Science, IF: 4.936.

d.2. Proceedings ISI:

- **Andrei Asăndulesei**, Marius-Tiberiu Alexianu, Roxana-Gabriela Curcă, Ștefan Caliniuc, Mihaela Asăndulesei 2014 – *Settling Selection Patterns in the Subcarpathian Areas of Romania. Salt Resources as a Determining Factor for Prehistoric Occupation*, 14th SGEM Geoconference on Informatics, Geoinformatics and Remote Sensing, 3/2, 829-839;
- Radu-Gabriel Pîrnău, Cristian-Valeriu Patriche, Bogdan Roșca, Ionuț Vasiliniuc, **Andrei Asăndulesei** 2015 – *Spatial variability of soil properties in areas affected by prehistoric human occupation*, 15th International Multidisciplinary Scientific Geoconference, 2/3, 325-332.

d.3. Articole/Studii publicate in extenso în reviste din circuitul științific internațional:

- Felix-Adrian Tencariu, **Andrei Asăndulesei** 2019 – *'Rock Salt Around the Clock'. Ethnoarchaeological research concerning extraction of salt for animal needs by the shepherds*, Studia Antiqua et Archaeologica, 25(2): 497-507, (indexată Scopus, EBSCO, CEEOL, DOAJ, ERIH-PLUS);
- Felix-Adrian Tencariu, **Andrei Asăndulesei** 2019 – *Recent Addenda to the Mapping and Ethnoarchaeological Research of the Brine Springs from Bistrița-Năsăud County*, Arheologia Moldovei, XLII: 285-300, (revistă indexată ERIH-PLUS, Scopus, EBSCO, CEEOL);
- Diana-Măriuca Vornicu, **Andrei Asăndulesei**, Dumitru Boghian, Felix-Adrian Tencariu 2018 – *Recent Investigations In The Early Chalcolithic Settlement Of Balș – La Brigada (Romania)*, Arheologia Moldovei, XLI: 161-178, (indexată Scopus, ERIH-PLUS);
- Felix-Adrian Tencariu, Diana-Măriuca Vornicu, **Andrei Asăndulesei**, Loredana Solcan, George Bodi, Casandra Brașoveanu 2017 – *Investigating a Chalcolithic dwelling at Isaia, Iași County, Romania*, Studia Antiqua et Archaeologica, 23(2): 187–211 (indexată Scopus, EBSCO, CEEOL, DOAJ, ERIH-PLUS);



- Alin Mișu-Pintilie, **Andrei Asăndulesei**, Cristian Constantin Stoleriu, Gheorghe Romanescu 2016 – *GIS methods for assessment of hydrogeomorphic risk and anthropogenic impact which affect the archaeological sites. Case study: Dealul Mare archaeological site, Moldavian Plateau (Romania)*, Acta Geobalcanica, 2, 1, 35-43, DOI: <https://doi.org/10.18509/AGB.2016.04>.

e. Articole/studii publicate in extenso în volumele conferințelor internaționale de specialitate:

- **Andrei Asăndulesei**, Felix-Adrian Tencariu, Radu Balaur, Mihaela Asăndulesei 2019 – *Back to the roots. Remote sensing techniques for rediscovering the Chalcolithic eponymous settlement of Cucuteni culture, Romania*, in: New Global Perspectives on Archaeological Prospection. 13th International Conference on Archaeological Prospection 28 August - 1 September 2019, Sligo, Ireland (ed. James Bonsall): 125-128, Archaeopress Publishing, Oxford <http://uefiscdi.gov.ro/userfiles/file/CENAPOSS/Edituri%20prestigiul%20international%20Arte%20&%20Științe%20Umaniste.pdf>);
- **Andrei Asăndulesei**, Felix-Adrian Tencariu, Mihaela Asăndulesei, Radu Balaur 2017 – *Settling selection patterns and settlement layout development in the Chalcolithic Cucuteni culture of northeastern Romania. Interpretation and presentation of prospection results*, in: Proceedings of the 12th International Conference of Archaeological Prospection, 12th-16th September 2017, The University of Bradford (eds. B. Jennings, C. Gaffney, T. Sparrow, S. Gaffney), Oxford, Archaeopress: 8-10 (<http://uefiscdi.gov.ro/userfiles/file/CENAPOSS/Edituri%20prestigiul%20international%20Arte%20&%20Științe%20Umaniste.pdf>);
- Dumitru Boghian, Sergiu-Constantin Enea, Radu Pîrnău, Aurel Melniciuc, **Andrei Asăndulesei**, Felix-Adrian Tencariu 2016 – *Încercare de reconstituire a evoluției peisajului preistoric în Depresiunea Prutului Mijlociu, microzona sitului cucutenian de la Ripiceni – Holm, jud. Botoșani (partea II)*, in: Micle D. (coord.), Arheovest IV2 – În onoare Adrian Bejan – Interdisciplinaritate în Arheologie și Istorie, Editura JATEPress Kiadó Szeged, ISBN 978-963-315-312-3, p. 561-590;
- **Andrei Asăndulesei**, Ionuț Cristi Nicu, Mihaela Asăndulesei 2015 – *Archaeological prospection and natural risk management in prehistoric sites from Eastern Romania. A case study: settlement from Costești, Cier (Iași County, Romania)*, in: Proceedings of the Second International Conference held at State Hermitage Museum, Virtual Archaeology (Methods and benefits), Saint Petersburg, The State Hermitage Publishers, 89–103;
- Dumitru Boghian, Sergiu-Constantin Enea, Ciprian-Catalin Lazanu, Radu Pîrnău, Luminița Bejenaru, Simina Stanc, Viorica Vasilache, Ion Sandu,



Andrei Asăndulesei, Felix-Adrian Tencariu 2013 – *Rezultate preliminare ale investigațiilor interdisciplinare din situl de la Tăcuta- "Dealul Miclea" (Paic), jud. Vaslui*, in: Andrei Stavilă, Dorel Micle, Adrian Cîntar, Cristian Floca și Sorin Fortju (eds.), *ArheoVest I. In Memoriam Liviu Măruia, Interdisciplinaritate în Arheologie și Istorie*, JATEPress Kiadó, Szeged, 487-508;

- Cătălin Bem, **Andrei Asăndulesei**, Carmen Bem, Felix-Adrian Tencariu, Vasile Cotiugă, Ștefan Caliniuc 2012 – *Identity in diversity: photogrammetry, 3D laser scanning and magnetometric analysis of Gumelnița tells from Muntenia (Romania)*, in: *Interdisciplinary Research in Archaeology. Proceedings of the First Arheoinvest Congress, 10–11 June 2011, Iași, Romania* (edited by V. Cotiugă, Ș. Caliniuc) BAR International Series 2433, Oxford, Archaeopress, ISBN 9781407310329: 19-36, (<http://uefiscdi.gov.ro/userfiles/file/CENAPOSS/Edituri%20prestigiu%20international%20Arte%20&%20Științe%20Umaniste.pdf>);
- Ion Niculiță, Vasile Cotiugă, Aurel Zanoci, **Andrei Asăndulesei**, Gheorghe Romanescu, Felix-Adrian Tencariu, Radu Balaur, Mihail Băț, Cristi Nicu, Ștefan Caliniuc 2012 – *Magnetometric Prospections in the Thraco-Getae Fortress from Saharna Mare, Rezina District, Republic of Moldova*, in: *Interdisciplinary Research in Archaeology. Proceedings of the First Arheoinvest Congress, 10–11 June 2011, Iași, Romania* (eds. V. Cotiugă, Ș. Caliniuc) BAR International Series 2433, Oxford, Archaeopress, ISBN 9781407310329: 87-92.



f. Lista citărilor

f.1. Scopus

Author details

Asandulesei, Andrei [View potential author matches](#)

Author ID: 55155300600 [ORCID](#)
<http://orcid.org/0000-0001-8781-0468>

Affiliation(s): [Universitatea Alexandru Ioan Cuza, Iasi](#) [View more](#) ▼

Other name formats: [Asândulesei, Andrei](#) [Asândulesei, A.](#) [Asândulesei, Andrei](#) [Asandulesei, A.](#)

Subject area: [Arts and Humanities](#) [Earth and Planetary Sciences](#) [Social Sciences](#) [Environmental Science](#) [Physics and Astronomy](#)
[Agricultural and Biological Sciences](#)

Profile actions

- [Edit author profile](#)
- [Connect to ORCID](#)
- [Alerts](#)
 - [Set citation alert](#)
 - [Set document alert](#)
- [Learn more about Scopus Profiles](#)

AA Andrei Asandulesei
16 Documents
[View Mendeley profile](#)

Documents by author: **16** [Analyze author output](#)

Total citations: **80** by 71 documents [View citation overview](#)

h-index: **4** [View *h*-graph](#)

Document and citation trends:

Year	Documents	Citations
2011	1	0
2012	2	0
2013	1	1
2014	3	2
2015	1	1
2016	2	2
2017	3	3
2018	2	3
2019	1	4
2020	1	5

16 Documents [Cited by 71 documents](#) [30 co-authors](#) [Topics](#)

[View in search results format](#) [View 595 references](#) [Sort on: Date \(newest\)](#)

[Export all](#) [Add all to list](#) [Set document alert](#) [Set document feed](#)

Document title	Authors	Year	Source	Cited by
Pars pro toto-remote sensing data for the reconstruction of a rounded chalcolithic site from NE Romania: The case of ripiceni-holm settlement (cucuteni culture) <i>Open Access</i>	Asandulesei, A., Tencariu, F.A., Nicu, I.C.	2020	Remote Sensing 12(5),887	2
Roman army and salt exploitation in dacia	Mihailescu-Bîrliba, L., Asândulesei, A.	2019	Journal of Ancient History and Archaeology 6(3), pp. 27-48	0

[View abstract](#) [View at Publisher](#) [Related documents](#)

[View abstract](#) [View at Publisher](#) [Related documents](#)



GIS-based evaluation of diagnostic areas in landslide susceptibility analysis of Bahluiet River Basin (Moldavian Plateau, NE Romania). Are Neolithic sites in danger?	Nicu, I.C., Asăndulesei, A.	2018	Geomorphology 314, pp. 27-41	15
View abstract View at Publisher Related documents				
RECENT INVESTIGATIONS in the EARLY CHALCOLITHIC SETTLEMENT OF BALȘ - La BRIGADa (ROMANIA)	Vornicu, D.-M., Asandulesei, A., Boghian, D., Tencariu, F.-A.	2018	Arheologia Moldovei 41, pp. 161-178	0
View abstract View at Publisher Related documents				
Ovine pastoralism and mobility systems in Romania: An ethnoarchaeological approach (Book Chapter)	Brigand, R., Weller, O., Tencariu, F.A., Alexianu, M., Asăndulesei, A.	2018	<i>Historical Archaeologies of Transhumance across Europe</i> pp. 245-263	1
View abstract View at Publisher Related documents				
Investigating a chalcolithic dwelling at Isaiia, iași county, Romania	Tencariu, F.A., Vornicu, M., Asandulesei, A., (...), Bodi, G., Brașoveanu, C.	2017	Studia Antiqua et Archaeologica 23(2), pp. 187-211	0
View abstract View at Publisher Related documents				
Inside a cucuteni settlement: Remote sensing techniques for documenting an unexplored eneolithic site from northeastern romania <i>Open Access</i>	Asăndulesei, A.	2017	Remote Sensing 9(1),41	16
View abstract View at Publisher Related documents				
Using GPR for assessing the volume of sediments from the largest natural dam lake of the Eastern Carpathians: Cujejd Lake, Romania	Mihu-Pintilie, A., Asandulesei, A., Nicu, I.C., Stoleriu, C.C., Romanescu, G.	2016	Environmental Earth Sciences 75(8),710	5
View abstract View at Publisher Related documents				
Spatial variability of soil properties in areas affected by prehistoric human occupation	Pîrnău, R.G., Patriche, C.-V., Roșca, B., Vasiliuic, I., Asăndulesei, A.	2015	International Multidisciplinary Scientific GeoConference Surveying Geology and Mining Ecology Management, SGEM 2(3), pp. 325-332	0
View abstract View at Publisher Related documents				
Oblique air photography for chalcolithic sites from eastern romania. analysis and interpretation. some examples	Asandulesei, A.	2014	Studia Antiqua et Archaeologica 20(1), pp. 69-89	1
View abstract View at Publisher Related documents				
The distribution of salt massifs and the exploitation of ancient and current reserves of mineralized waters within the siret hydrographical basin (Romania) – case study for the eastern area of the eastern carpathians	Romanescu, G., Alexianu, M., Asăndulesei, A.	2014	International Multidisciplinary Scientific GeoConference Surveying Geology and Mining Ecology Management, SGEM 1(3), pp. 731-746	1
View abstract View at Publisher Related documents				



Settling selection patterns in the subcarpathian areas of Romania. salt resources as a determining factor for prehistoric occupation	Asăndulesei, A., Alexianu, M.-T., Curcă, R.-G., Caliniuc, Ș., Asăndulesei, M.	2014 International Multidisciplinary Scientific GeoConference Surveying Geology and Mining Ecology Management, SGEM 3(2), pp. 829-839	0
View abstract Related documents			
Interdisciplinary investigations. The tell settlement from Vătași Măgura (Teleorman County, Romania)	Bern, C., Asăndulesei, A., Haită, C., Bern, C., Florea, M.	2013 Studii de Preistorie 2013(10), pp. 89-117	1
View abstract Related documents			
Use of the 3-D scanner in mapping and monitoring the dynamic degradation of soils: Case study of the Cucuteni-Baiceni Gully on the Moldavian Plateau (Romania) <i>Open Access</i>	Romanescu, G., Cotiuga, V., Asandulesei, A., Stoleriu, C.	2012 Hydrology and Earth System Sciences 16(3), pp. 953-966	34
View abstract View at Publisher Related documents			
Cesium magnetometer survey in the Cucuteni settlement of Fulgeriș - La trei cireși, Bacău county, Romania	Asăndulesei, A., Istina, L., Cotiugă, V., (...), Nicu, C., Venedict, B.	2012 Romanian Reports in Physics 64(3), pp. 878-890	2
View abstract Related documents			
Geophysical prospecting techniques used in archaeology. Magnetometry	Asăndulesei, A.	2011 Studia Antiqua et Archaeologica 17(1), pp. 5-17	2
View abstract Related documents			

Display: results per page[1](#)[^ Top of page](#)

The data displayed above is compiled exclusively from documents indexed in the Scopus database. To request corrections to any inaccuracies or provide any further feedback, please use the [Author Feedback Wizard](#).

About Scopus

[What is Scopus](#)
[Content coverage](#)
[Scopus blog](#)
[Scopus API](#)
[Privacy matters](#)

Language

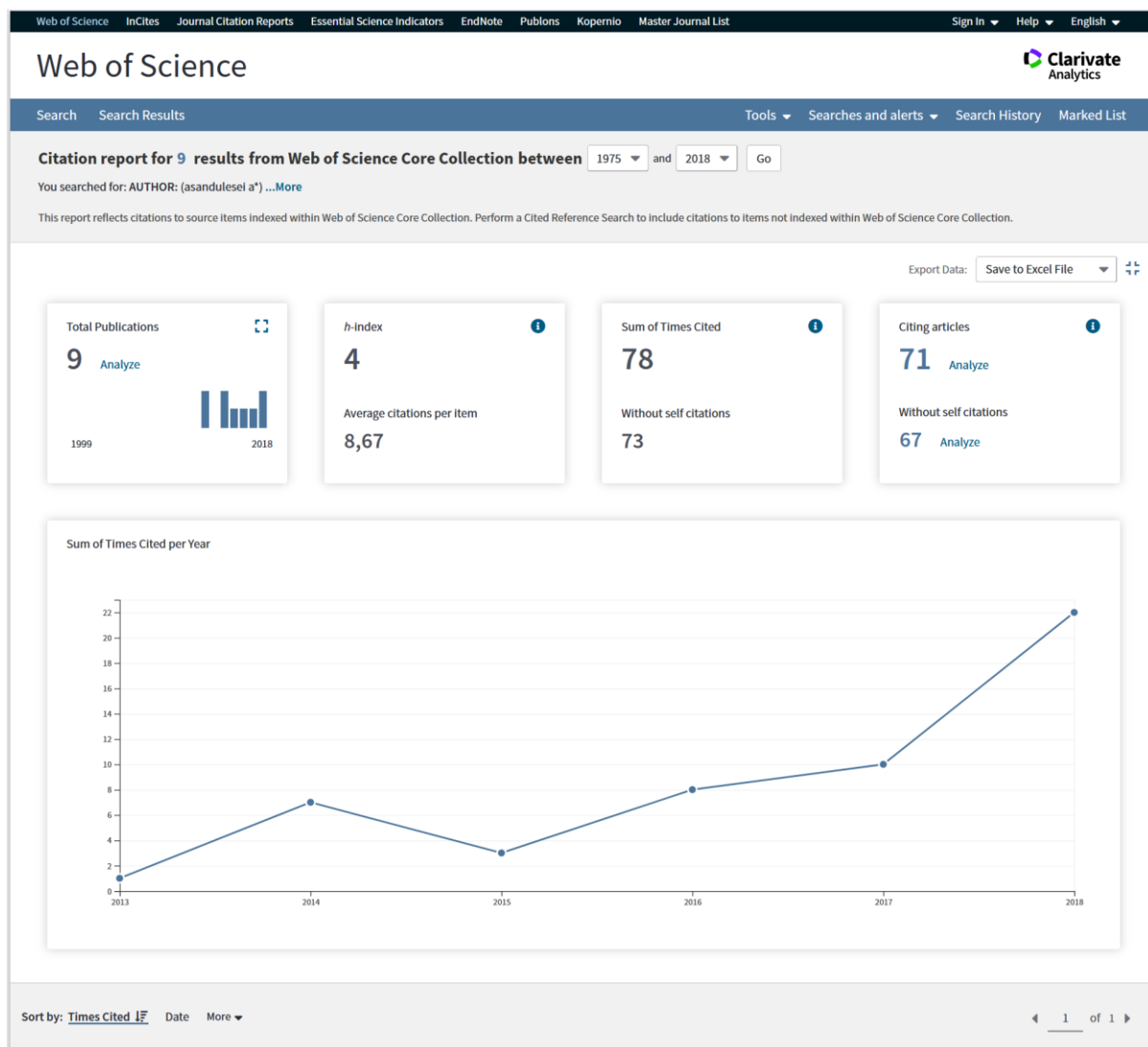
[日本語に切り替える](#)
[切换到简体中文](#)
[切换到繁體中文](#)
[Русский язык](#)

Customer Service

[Help](#)
[Contact us](#)



f.2. Web of Science





f.3. Google Scholar

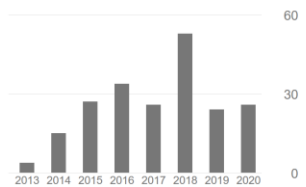
**Andrei Asandulesei**

URMĂRIȚI ACTIV

Researcher PhD, Interdisciplinary Research Department-Field Science, "A.L.L. Cuza" University of
Adresă de e-mail confirmată pe uaic.ro - [Pagina de pornire](#)
[Archaeology](#) [GIS](#) [Geophysics](#) [3D](#)

Citat de

	Toate	Din 2015
Referințe bibliografice	218	191
h-index	7	7
i10-index	6	4



Coautori

EDITAȚI

Nu există coautori

<input type="checkbox"/>	TITLU	CITAT DE	ANUL
<input type="checkbox"/>	Use of the 3-D scanner in mapping and monitoring the dynamic degradation of soils: case study of the Cucuteni-Baiceni Gully on the Moldavian Plateau (Romania) G Romanescu, V Cotiuga, A Asandulesei, C Stoleriu Hydrology and Earth System Sciences 16 (3), 953	67	2012
<input type="checkbox"/>	Inside a Cucuteni settlement: remote sensing techniques for documenting an unexplored Eneolithic site from northeastern Romania A Asandulesei Remote Sensing 9 (1), 41	25	2017
<input type="checkbox"/>	GIS-based evaluation of diagnostic areas in landslide susceptibility analysis of Bahluiț River Basin (Moldavian Plateau, NE Romania). Are Neolithic sites in danger? IC Nicu, A Asandulesei Geomorphology 314, 27-41	16	2018
<input type="checkbox"/>	Using GPR for assessing the volume of sediments from the largest natural dam lake of	14	2016