



Co-funded by the
Erasmus+ Programme
of the European Union

VIRTUAL INSTITUTE FOR GOOD HEALTH AND WELL-BEING – GLADE

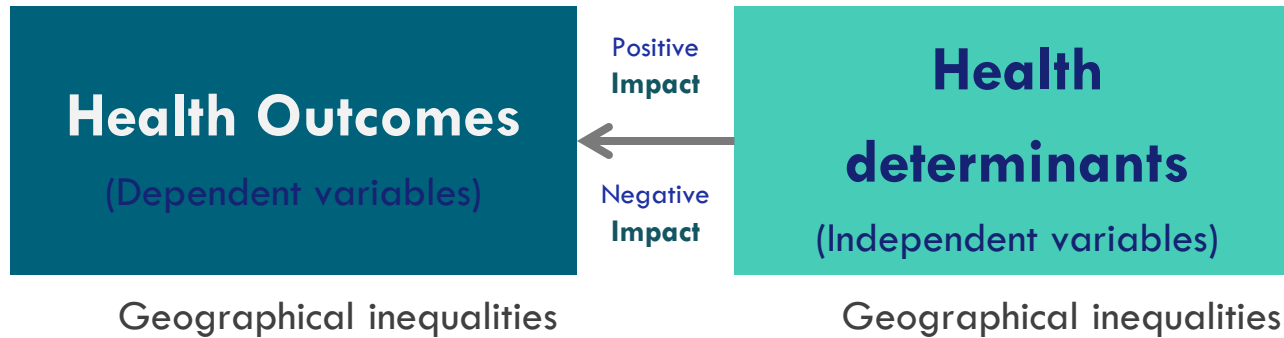
Social Determinants of health: Healthy Cities An Integrated Approach to Health

2022



Healthy Cities: An Integrated Approach to Health

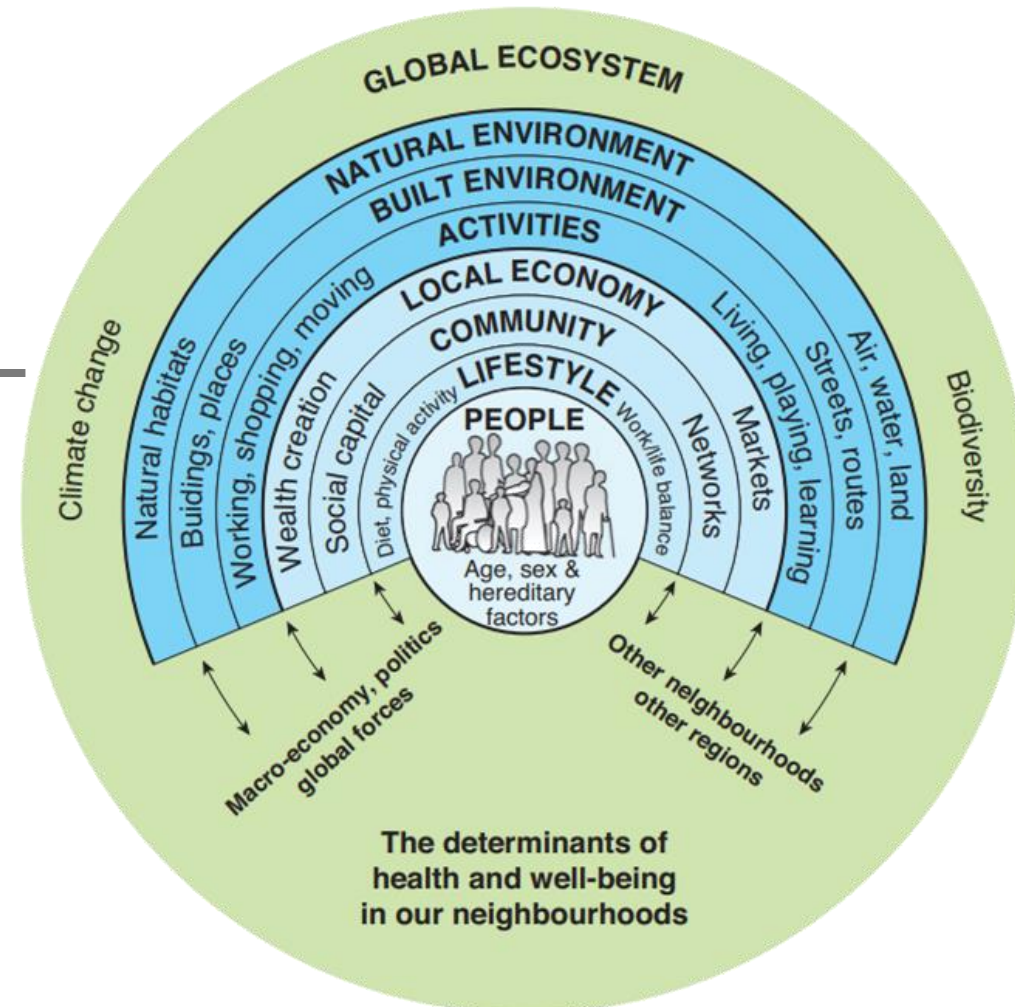
To plan healthy cities we must know and assess health outcomes and, mostly, the places where people **live, work and age**



Healthy Cities: An Integrated Approach to Health

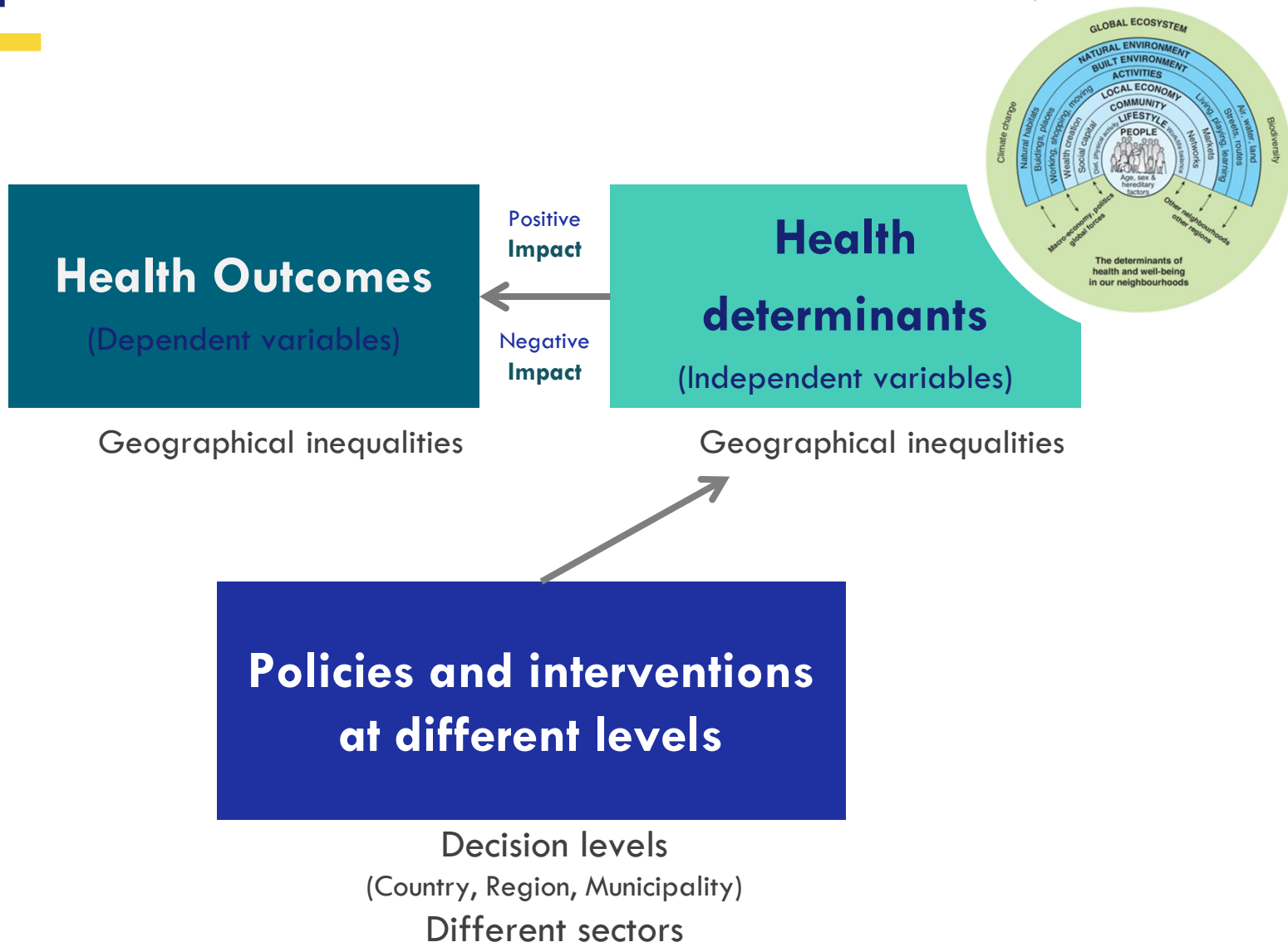
Health Outcomes
(Dependent variables)

Geographical inequalities

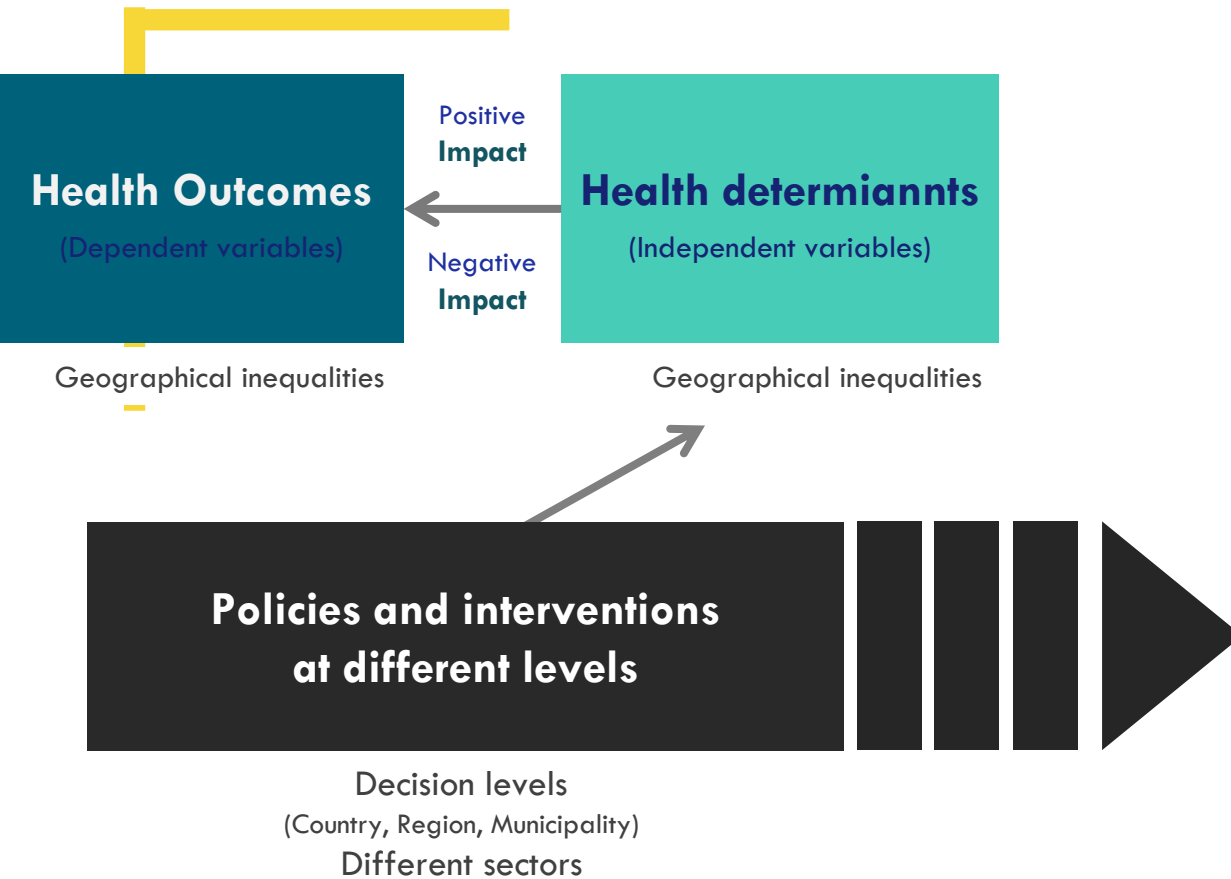


Barton & Grant. A Health Map for the local human habitat. 2006; The Journal for the Royal Society for the Promotion of Health, 126(6), 252-253 based on Dahlgren & Whitehead. Policies and Strategies to promote equity in health. 1991; Copenhagen: WHO, Regional Office for Europe.

Healthy Cities: An Integrated Approach to Health



An Integrated Approach to Health



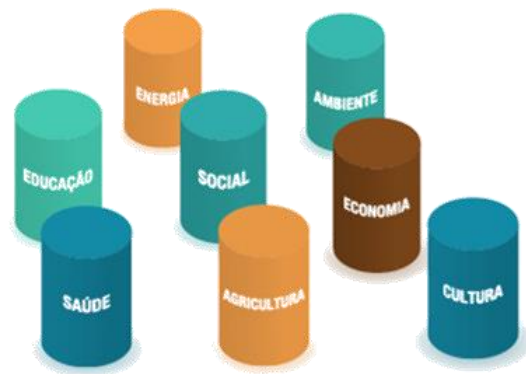
Health in all policies



Healthy Cities: An Integrated Approach to Health

Paradigm shift

From Traditional Siloed Thinking...

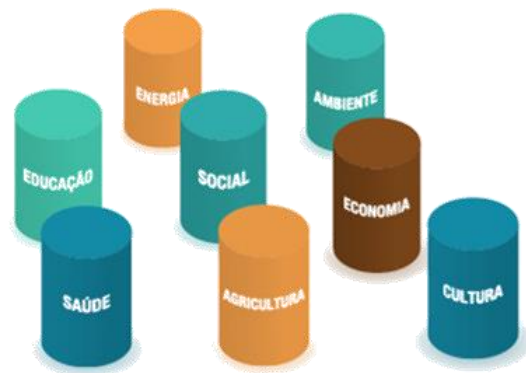


Healthy Cities: An Integrated Approach to Health

Paradigm shift



From Traditional Siloed Thinking...



...to Collaboration

Intersectoral,
Interinstitucional
Transdisciplinar

GLADE Ongoing research: Guidelines for local authorities | Stakeholders Survey

Aims:

Generate relevant knowledge that can inform the design of guidelines that can leverage and foster City-Universities innovative collaborations and partnerships (between universities, city councils, health authorities, NGOs) with potential to promote healthy environments and enhance opportunities for good health and well-being for all.

Break the silos

Enhance communication

Bridge the gap

Stakeholder's mobilization

