

ENIS

European Network on International Student Mobility
Connecting Research and Practice

04-06 | jun | 2025

Iași | Romania

3rd

ENIS
Conference
programme



European Network on International Student Mobility
Connecting Research and Practice

lasi

04-06 | jun

Join
us!

Click here to register for online attendance

Deadline: 23 | may | 2025





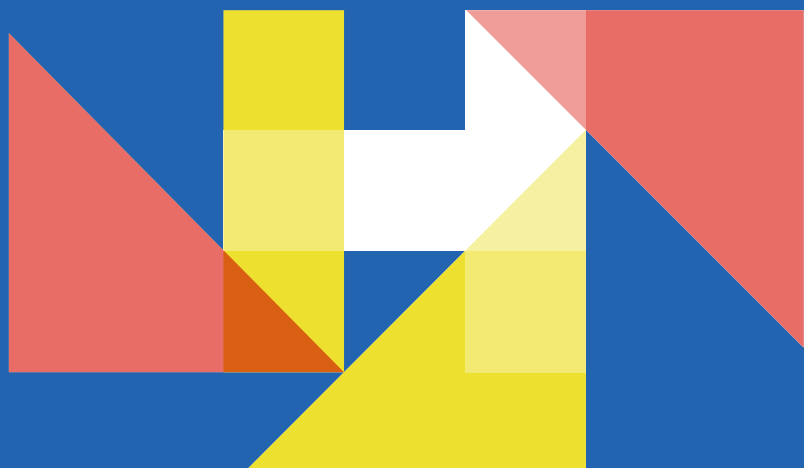
European Network on International Student Mobility
Connecting Research and Practice

03 | jun

tuesday

day 0

**Pre-conference
activities**



day 0 schedule



In front of the "Alexandru Ioan
Cuza" University of Iași



17:00

City tour

Mihai Bulai (Iași.Travel NGO)



City Hall (Ștefan cel Mare și Sfânt
Boulevard no. 11)



19:00

Welcome reception

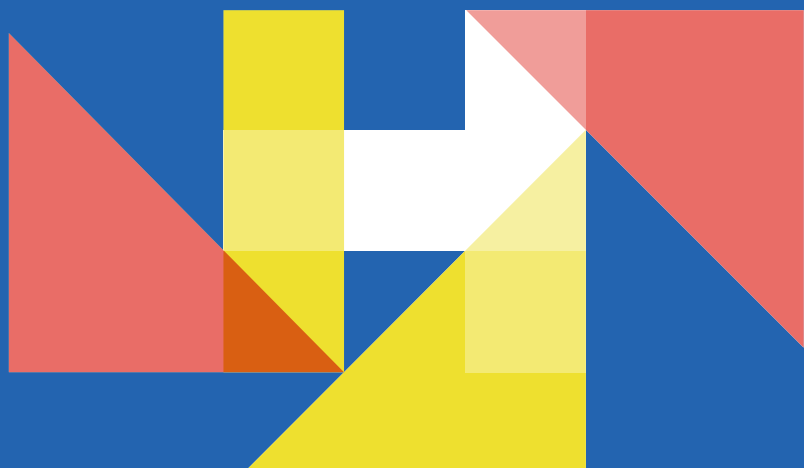


European Network on International Student Mobility
Connecting Research and Practice

04 | jun

wednesday

day 1
**Conference
programme**



day 1 schedule



ARFI – Romanian Academy, Iași Branch
CUI – „Alexandru Ioan Cuza” University
of Iași



08:45-09:30 | ARFI
Registration



09:30-10:05 | ARFI Aula
Opening of 3rd ENIS Conference

Christof Van Mol (Tilburg University |
ENIS Chair) & Nicolai Netz (German
Centre for Higher Education
Research and Science Studies)



10:05-10:25 | ARFI Aula
Welcome address

Viorel Barbu (President of the
Romanian Academy, Iași Branch) &
Liviu-George Maha (Rector of
„Alexandru Ioan Cuza” University of
Iași)



10:25-10:45 | ARFI Aula
ENIS Awards

Judith Borràs (Universitat de Lleida)



10:45-11:30 | ARFI Aula
Opening lecture

International cooperation in
higher education - defending
academic principles in an
increasingly inward looking world

Ligia Deca (Vice-Rector of the
National School of Political and
Administrative Studies, Bucharest)



11:30-12:00
Coffee break



CUI | ARFI



12:00-13:00 | ARFI Aula
**Spotlight session | The impact of
ENIS**

Sevgi Kaya-Kasikci (Middle East
Technical University), Eero Loonurm
(Youth Board of Estonia) & Luca Alexa
Erdei (Eötvös Loránd University)



13:00-14:30
Lunch break



CUI



14:30-16:00
Session 1.1 | ARFI Aula

Global ISM flows and trends at
the macro-level

**Session 1.2 | CUI - „Vespasian
Pella” Room**

Social and cultural integration of
students

**Session 1.3 | CUI - „Ion
Simionescu” Room**

Digital mobilities

**Session 1.4 (15:00-16:00) | ARFI –
Seminar Room**

Enhancing International Student
Mobility and Labour Market
Integration: Policy Insights for
Graduate Retention



16:00-16:30
Coffee break



CUI

day 1 schedule



ARFI – Romanian Academy, Iași Branch
CUI – „Alexandru Ioan Cuza” University
of Iași



16:30-18:00

Session 2.1 | CUI - „Ion
Simionescu” Room

Social Inequalities

Session 2.2 | CUI - „Vespasian
Pella” Room

Survival mobility: Challenges and
Prospects for HE

Session 2.3 | ARFI Aula

The impact of international
student mobility

Session 2.4 | ARFI – Seminar
Room

Experiences of international
students

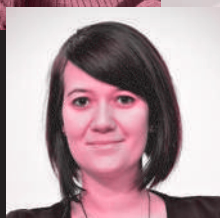
SPEAKERS & CHAIRS | Who's who



10:45 - 11:30 | Opening keynote lecture

International cooperation in higher education - defending academic principles in an increasingly inward looking world

Ligia Deca (National School of Political and Administrative Studies, Bucharest)



12:00 – 13:00 | Spotlight session | The impact of ENIS

Host: Sevgi Kaya-Kasikci | Middle East Technical University, Eero Loonurm | Youth Board of Estonia & Luca Alexa Erdei | Eötvös Loránd University

Participants: Cosmin Nada | ISCTE-IUL, Betul Bulut-Sahin | TED University, Judith Borràs-Andrés | University of Lleida & Joyce Aguiar | University of Porto



14:30 – 16:00 | Session 1.1 | Session of WG1 (Global ISM flows and trends at the macro-level)

Chairs: Giorgio Marinoni | International Association of Universities, Queenie Lam | Y-Europe Consulting



SPEAKERS & CHAIRS | Who's who



14:30 - 16:00 | Session 1.2 | Social and cultural integration of students trends

Chairs: Zeynep Köylü (University of Basel) & Betül Bulut Şahin (TED University)

Introduction to "GLOCALSA": A project dedicated to the development of international students' global competences through a smartphone application

Judith Borrás (University of Lleida), Josep M. Cots (University of Lleida), Anca Frumuselu (University of Lleida), Toni Granollers (University of Lleida), Àngels Llanes (University of Lleida), Thaïs Mena (University of Lleida), Glòria Vázquez (University of Lleida), Lidia Gallego-Balsà (University of Rovira i Virgili), & Sonia Mas (Universitat Autònoma de Barcelona)

Unpacking Social Network Dynamics of Chinese Sojourners in Ireland: An Ecological Perspective on Group and Individual Experiences

Yuyao Xiao (University College Cork, Ireland)

The impact of year-long language study abroad on plurilingual and pluricultural identity development in L1 English speakers

Emma Riordan & Anne Marie Devlin (University College Cork)



14:30 - 16:00 | Session 1.3 | Digital mobilities

Chair: Nicolai Netz (DZHW - German Centre for Higher Education Research and Science Studies)

Unraveling the Factors Predicting Students' Virtual Mobility Intentions in Turkish Higher Education

Merve Zayim-Kurtay (Middle East Technical University), Dr. Sevgi Kaya-Kasikci (Independent Researcher), & Prof. Dr. Yasar Kondakci (Middle East Technical University)

Reimagining International Education Through Blended Exchange: Exploring American and Brazilian Student Experiences

Grace Cleary (University of Illinois)



SPEAKERS & CHAIRS | Who's who



15:00 - 16:00 | Session 1.4 | Enhancing International Student mobility and Labour Market Integration: Policy Insights for Graduate Retention

Chairs: Cristina Fit (Executive Agency for Higher Education, Research, Development and Innovation Funding (UEFISCDI), Adriana Perez-Encinas (Universidad Autónoma de Madrid) & Wim Gabriels (Erasmus Student Network)



16:30 - 18:00 | Session 2.1 | Social Inequalities

Chairs: Daniel Klasik (University of North Carolina at Chapel Hill)

Enhancing Diversity & Inclusion in Erasmus+ Student Mobility: Insights from the Erasmus Student Network
Wim Gabriels (Erasmus Student Network)

Unpacking Inequality in Access to International Student Mobility Using the Multi-Level Ecological Model: A Review of Literature Based on Conceptual Papers

Mariia Tishenina (Edge Hill University), Sahizer Samuk (BI Norwegian Business School), Sylvie Lomer (University of Manchester), Irma Budginaite-Mackine (Vilniaus Universitetas), Zahide Erdogan (Ankara Hacı Bayram Veli University), Laura Dryjanska (Cardinal Stefan Wyszyński University in Warsaw), Leticja Gusio (Universiteti I Tiranes), Thais Franca (ISCTE-IUL), Annette Kratz (UUK), Cosmin Nada (ISCTE-IU), Orlanda Tavares (University of Minho), Sören Carlson (Europa-Universität Flensburg), Suvi Jokila (University of Turku), Aline Courtois (University of Bath)

International scholarship opportunities and the leave no one behind agenda of the Sustainable Development Goals

Annabel Boud (Commonwealth Scholarship Commission in the UK)



SPEAKERS & CHAIRS | Who's who



16:30 - 18:00 | Session 2.2 | Survival mobility: Challenges and Prospects for HE

Discussant: Giorgio Marinoni (International Association of Universities)

Moderator: Sanam Roohi (Centre for Modern Indian Studies, University of Göttingen)

Survival Mobility in Portuguese Higher Education: Addressing Challenges for Displaced Students

Cosmin Nada (ISCTE-IUL)

On the run: Escaping inhospitable conditions in one's home country through the means of foreign education

Mette Ginnerskov-Dahlberg (Uppsala University)

A Meta-synthesis of Forcibly Displaced Migrants' Experiences in Turkish Higher Education through Capabilities Framework

Yasar Kondakci, Merve Zayim-Kurtay and Sevgi Kaya (Middle East Technical University)

16:30 - 18:00 | Session 2.3 | The impact of international student mobility

Chairs: Jannecke Wiers-Jenssen | NIFU & John Cullinan | NUI Galway

Exploring the Effects of Internationalization on International Student Success in Romanian Bachelor Programs: a case study (2016-2022)

Cristina Fit (Executive Agency for Higher Education, Research, Development and Innovation Funding (UEFISCDI); National University of Political and Administrative Studies (SNSPA))

Exploring the Impact of International Student Mobility on Job Satisfaction

Vegard Wiborg (Nordic Institute for Studies of Innovation, Research and Education), Tora Knutsen (Nordic Institute for Studies of Innovation, Research and Education) & Jannecke Wiers-Jenssen (Nordic Institute for Studies of Innovation, Research and Education)

From International Education to International Academia

Tugay Durak (University College London)



SPEAKERS & CHAIRS | Who's who



16:30 - 18:00 | Session 2.4 | Experiences of international students

Chair: Annarita Magliacane | University of Liverpool

International Students' Experiences in China's English-Medium Instruction Programs: Precarity and Resilience

Nannan Lu (Nanyang Technological University - National Institute of Education, Singapore)

Intercultural competence and soft skills development through study abroad: The case of Spanish and Turkish students

Betül Bulut Şahin (TED University), Judith Borràs (University of Lleida), Zeynep Köylü (University of Basel) & Sahizer Samuk (Norwegian Business School Oslo)

The Role of Cultural Adaptation in Enhancing Career Development through International Student Mobility

Yasemin Tutar (Recep Tayyip Erdoğan University)



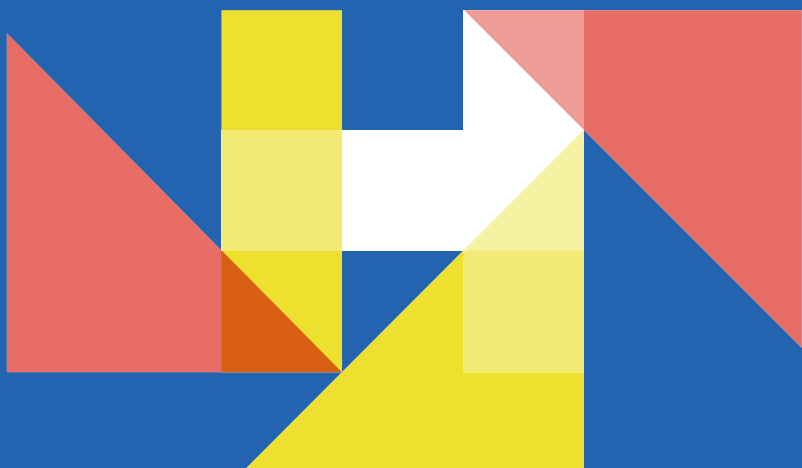


European Network on International Student Mobility
Connecting Research and Practice

05 | jun

thursday

day 2
**Conference
programme**



day 2 schedule



ARFI – Romanian Academy, Iași Branch
CUI – „Alexandru Ioan Cuza” University
of Iași



09:45-10:45 | CUI - „Ion Simionescu” Room

Workshop | How to maintain ISM flows in an economic-sustainable way in a changing political climate? – Vent, share and solve

Adriana Perez-Encinas (Autonomous University Madrid), Emrys Gerritse (OsloMet – Oslo Metropolitan University), Gregor Schäfer (University of Copenhagen) & Grace Cleary (Gies College of Business)



10:45-11:30 | CUI - „Ion Simionescu” Room

Fostering new collaborations | ENIS researcher-practitioner Short Term Scientific Missions and mentoring grants

Eero Loonurm (Estonian Education and Youth Board), Elina Apsite-Berina (University of Latvia), Cristina Sin (Universidade Lusófona), & Anita Keri (Tilburg University)



11:30-12:00
Coffee break

 CUI



12:00-13:30

Session 3.1 | CUI - „Ion Simionescu” Room

Negotiating multiple responsibilities: parenthood and international student mobility

Session 3.2 | ARFI Aula
Determinants of ISM

Session 3.3 | CUI - „Vespasian Pella” Room

The role of staff and institutions in shaping international experiences

Session 3.4 (15:00-16:00) | ARFI – Seminar Room

Employability of international students in the host country. Where to start? How to bring together practice and research?



13:30-14:30
Lunch break

 CUI



14:30-14:40

Pitch of poster presentations | ARFI Library



14:30-16:00

Plenary session of WG5 | ARFI Aula

Discussing international student mobility in a changing societal landscape: perspectives of researchers, practitioners and policymakers

day 2 schedule



ARFI – Romanian Academy, Iași Branch
CUI – „Alexandru Ioan Cuza” University
of Iași



16:00-16:30

Coffee break



CUI/ARFI



16:30-17:00

Poster session



ARFI Library



17:00-18:00

World Café session | Roundtable
discussions with researchers and
practitioners on any scientific
and/or practical questions that
you bring to the table



ARFI Library



19:30

Joint dinner



Panoramic Restaurant
Located in: Unirea Hotel & Spa
(Piața Unirii no. 5, Iași 700056)

SPEAKERS & CHAIRS | Who's who



09:45 - 10:45 | Workshop

How to maintain ISM flows in an economic-sustainable way in a changing political climate? – Vent, share and solve

Adriana Perez-Encinas | Autonomous University Madrid,
Emrys Gerritse | OsloMet – Oslo Metropolitan University,
Gregor Schäfer | University of Copenhagen & Grace
Cleary | Gies College of Business



10:45 – 11:30 | Fostering new collaborations | ENIS researcher-practitioner Short Term Scientific Missions and mentoring grants

Eero Loonurm | Estonian Education and Youth Board,
Elina Apsite-Berina | University of Latvia, **Cristina Sin** |
Universidade Lusófona & **Anita Keri** | Tilburg University



SPEAKERS & CHAIRS | Who's who



12:00 – 13:30 | Session 3.1 | Negotiating multiple responsibilities: parenthood and international student mobility

Chair: Christof Van Mol (Tilburg University)

Academic mobility and the family

Maggi Leung (University of Amsterdam)

'We can't get Padron because our Landlord refuses to supply us with statutory paperwork'; Glitz, Glitches and Glamour of being an International Postgraduate West African student parents in Spain higher education

Umoh Adetola Elizabeth (University of Autonomous Barcelona)

Exploring the effects of parenting on participation in Erasmus+ student mobility

Rúna Guðmarsdóttir (Rannís and Tilburg University)



12:00 – 13:30 | Session 3.2 | Determinants of ISM

Chair: Yasar Kondakci (Middle East Technical University) & Queenie Lam (Y-Europe)

Linguistic proximity and international migration of students from Ukraine to Europe

Michaela Pilova (Slovak Academy of Sciences) & Miloslav Bahna (Slovak Academy of Sciences)

Exploring the GAP: Understanding the Micro-, Meso-, and Macro-level Factors Influencing Outbound Short-term Student Mobility

Luca Alexa Erdei (Eötvös Loránd University) & Georgina Kasza (Tempus Public Foundation)



Bridging Divides or Widening Gaps? The Dual Role of Vietnamese Educational Agents in Reproducing and Disrupting Social Inequalities in Access to International Education

Trang Thu Nguyen (University of Liverpool)



12:00 – 13:30 | Session 3.3 | The role of staff and institutions in shaping international experiences

Chair: Catherine Montgomery (Durham University)

The Third Space Environments for Internationalization and Identities of International Office Professionals in Higher Education

Seda Okur (Ankara Music and Fine Arts University), Serap Emil (Middle East Technical University) & Betül Bulut Şahin (TED University)

Understanding Employability Experiences of International Students in UK Universities

Lindsay Nygren (University of Glasgow)

Social inequalities, gender and international student mobility: Exploring the minoritized voices of international female students living in transnational families in the post-Covid-19 era

Eleni Meletiadou (London Metropolitan University)



SPEAKERS & CHAIRS | Who's who



14:30 – 16:00 | Plenary session of WG5 | Discussing international student mobility in a changing societal landscape: perspectives of researchers, practitioners and policymakers

Panel moderator: Cosmin Nada (CIES-Iscte, University Institute of Lisbon)

Panel Speakers: Cristina Sin (Lusófona University). Cristina Fiț (UEFISCDI) & Andra-Mirona Stan-Dragotesc (Universitatea de Vest, Timișoara)



15:00 – 16:00 | Session 3.4 | Employability of international students in the host country. Where to start? How to bring together practice and research?

Chairs: Emilia Kmiotek-Meier (University of Cologne)

Employability of international students in the host country. Where to start? How to bring together practice and research?

16:30 – 17:00 | Poster session

Reflections on the ENIS Virtual Summer Schools: Insights and Opportunities for the 3rd Edition

Judith Borràs (Universitat de Lleida); Dangenı (Newcastle University); Ani Chelishvili (Business and Technology University) & Ying Yang (Education University of Hong Kong)

Advancing Internationalization at Home: Key Findings and Outputs from the EPOS Project

María Victoria Soulé (University of Cyprus)

Empowering International Office Staff: A Comparative Study on Intercultural Competence at Turkish and UK Universities

Seda Okur (Ankara Music and Fine Arts University), Dangenı Dangenı (Newcastle University)

Taking the Pulse: A Practitioner Approach to Social and Cultural Integration Initiatives for International Students at a Large U.S. Research University

Tracy Waldman (Rutgers, The State University of New Jersey) & Megan Francis (Rutgers, the State University of New Jersey) & Oi Yin Lo (Rutgers, the State University of New Jersey)

Mobility of West African International PhD students, Job Market and Work Transition in South Africa

Uwem Samuel (University of Hradeclovce), Umoh Adetola Elizabeth (Autonomous University Barcelona) & Gbemi Gbadebo Oyewo (Independent Researcher)



SPEAKERS & CHAIRS | Who's who

16:30 – 17:00 | Poster session

Towards a desirable life. Imaginaries and Experiences of International Student Mobility to Italy

Francesca Morra (Politecnico di Torino), Silvia Aru (University of Turin) & Ilaria Eloisa Lesmo (University of Turin)

Balancing Policy and Equity: Political Approaches to Refugees' Access to Higher Education

Zahide Erdoğan (Ankara Hacı Bayram Veli University)

How Can Volunteering be a Pathway to Integration? A Qualitative Study on International Students

Giovanni Aresi (Università Cattolica del Sacro Cuore & CERISVICO); Maura Pozzi (Università Cattolica del Sacro Cuore & CERISVICO); Anastasija Sojic (Università Cattolica del Sacro Cuore); Iwona Nowakowska (The Maria Grzegorzewska University); Amanda Murphy (Università Cattolica del Sacro Cuore) & Elena Marta (Università Cattolica del Sacro Cuore & CERISVICO)

Parenting abroad: Addressing the challenges and support needs of families on international mobility

Sejdi Sejdiu (University "Ukshin Hoti" Prizren) & Rezarta Ramadani (University "Ukshin Hoti" Prizren)

EUROSTUDENT data on ISM in the European Higher Education Area. Intentions, obstacles, organization and funding and recognition practice

Eva-Maria Vögtle (German Centre for Higher Education Research and Science Studies)

Do European mobilities make students more European? A meta-analysis

Zsuzsa Blasko (Independent Researcher)

17:00 - 18:00 | World Café Session

The world café session consists of roundtable discussions on any ISM-topic conference participants would like to bring to the table, related to the general topic of the table. The questions / issues can be practical or scientific. The following five table topics are available:

Global ISM flows and trends | Discussion leader: Yasar Kondakci (Middle East Technical University) & Queenie Lam (Y-Europe)

Social inequalities in access to and during ISM | Discussion leader: Sanam Roohi (Centre for Modern Indian Studies, University of Göttingen) & Rúna Guðmarsdóttir (Rannís)

The social and cultural integration of international students | Discussion leaders: Zeynep Köylü (University of Basel) & Betül Bulut Şahin (TED University)

Outcomes of ISM | Discussion leaders: Jannecke Wiers-Jenssen (NIFU) & John Cullinan (NUI Galway)

Connecting Research and Practice | Discussion leaders: Giorgio Marinoni (International Association of Universities) & Cosmin Nada (ISCTE-IUL)





European Network on International Student Mobility
Connecting Research and Practice

06 | jun

friday

day 3
**Conference
programme**



day 3 schedule



ARFI – Romanian Academy, Iasi Branch
CUI – „Alexandru Ioan Cuza” University
of Iasi



09:00-10:00 | CUI - „Ion
Simionescu” Room
Workshop | Campfire
Conversations: Equal Access to
International Mobility—Breaking
Barriers, Building Bridges
Anezka Aubrechtova (OCEANS
network) & Gev Harutyunyan
(GaragErasmus)



10:15-11:45 | CUI - „Ion
Simionescu” Room
**Plenary session on general
thematic reviews**
Cristina Sin (Lusophone University),
Sylvie Lomer (University of
Manchester), Kutay Uzun (Trakya
University), Georgiana Mihut
(Warwick University), Anita Keri
(Tilburg University) & Merve
Zayim-Kurtay (Middle East
Technical University)



11:45-12:15
Coffee break

📍 CUI



12:15-13:00 | CUI - „Ion
Simionescu” Room
Closure keynote
Catherine Montgomery (Durham
University)



13:00-13:30 | CUI - „Ion
Simionescu” Room
The future of ENIS
Nicolai Netz (ENIS Vice-Chair |
DZHW) & Christof Van Mol
(ENIS Chair | Tilburg University)



13:30-14:30
Lunch break

📍 CUI



14:30-16:00
WG sessions

Open to all ENIS WG Members



WG1 | CUI - „Ion Simionescu”
Room

WG2 | „Vespasian Pella” Room

WG3 | CUI - „Irineu
Mihălcescu” Room

WG5 | ARFI Aula



16:30
Social Event

📍 TBA

SPEAKERS & CHAIRS | Who's who



09:00-10:00 | Workshop | Campfire Conversations: Equal Access to International Mobility—Breaking Barriers, Building Bridges

Chairs: Anezka Aubrechtova | OCEANS network & Gev Harutyunyan | GaragErasmus



12:15 – 13:00 | Closure keynote

The dynamics of cross-border academic mobility and immobility: what does the future hold?

Catherine Montgomery | Durham University

International academic mobility is influenced by its social, political and cultural environments and globally we are experiencing an era of extreme uncertainty, or what Stein (2021) characterises as the volatility, unpredictability, complexity and ambiguity of contemporary societies. Current fragile global relations are intensifying the precarity of international research and educational collaborations, for instance between China and the US (Postiglione, 2021) and across Europe (Courtois and Sautier, 2022). This presentation explores cross-border academic mobility in this increasingly complex context, and also suggests that forced mobility and academic immobilities should be considered part of the mobilities picture of globalised higher education (Courtois et al, forthcoming). Mobility as part of internationalisation encompasses immobilities and alongside forced migrations due to political persecution and war, there are asymmetries in resources for higher education and previously colonised contexts continue to experience epistemic injustices (Marginson and Xu, 2023; Montgomery and Trahar, 2023). For some mobile students and scholars, particularly those from the global south, challenges in crossing borders are increasing as 'power-geometries' (Massey 1999, p. 28) between nations intensify. Courtois et al (forthcoming) note that: 'All of this suggests that the vast workings of mobilities, that propel students and scholars to move across geographic borders, co-exist with immobilities, borders and enclosures.' This presentation will consider some of these tensions and contradictions and their potential impact on the future of student mobility. The presentation will also reflect on the themes and ideas raised in a selection of papers from this conference.





European Network on International Student Mobility
Connecting Research and Practice

IASI

Romania

useful
information



How to get



FROM THE IAȘI AIRPORT
TO YOUR HOTEL



Our recommendation Uber or Bolt

- You can book your trip in advance, but our recommendation is to order it after you pick up your luggage;
- Estimated price – 7-10 euros, one way to city center, depending on demand;
- Ride duration to the city center: 15-20 minutes, depending on traffic conditions;
- Pick-up spot: parking place, arrivals terminal.



Alternative option Express bus

To travel from the airport to the city center by Express Bus 50, the route includes the following stops: Airport, Str. Moara de Vânt (optional), Târgu Cucu, **Piața Unirii [Unirii Square] (the closest station to the conference venues)**, and Gara [Train Station].

Buses run non-stop, departing every 30 minutes from both the Airport and the Train Station. You can check the exact timetable [here](#).

Tickets for one and two journeys can be used on bus 50 at the price of 4 lei, respectively 7 lei. The ticket for one trip can be purchased from the driver (after validation in bus 50, it can be used for 120 minutes, for as many trips as you wish, on any route in the urban area).

Tickets can also be purchased through the mobile application 24 Pay (available in Play Store and App Store), which you can use in English or Romanian, as well as from the ticket machine in the Airport station.

How to get



CONFERENCE VENUES



The University House (main location) (in Romanian: Casa Universitarilor)

Address: Bulevardul Carol I 9, Iași 700506



Romanian Academy, Iași Branch (secondary location) (in Romanian: Academia Română, Filiala Iași)

Address: Bulevardul Carol I 8, Iași 700506



Main building

Entrance (from the General Henri Mathias Berthelot Street)



How to get



CONFERENCE VENUES

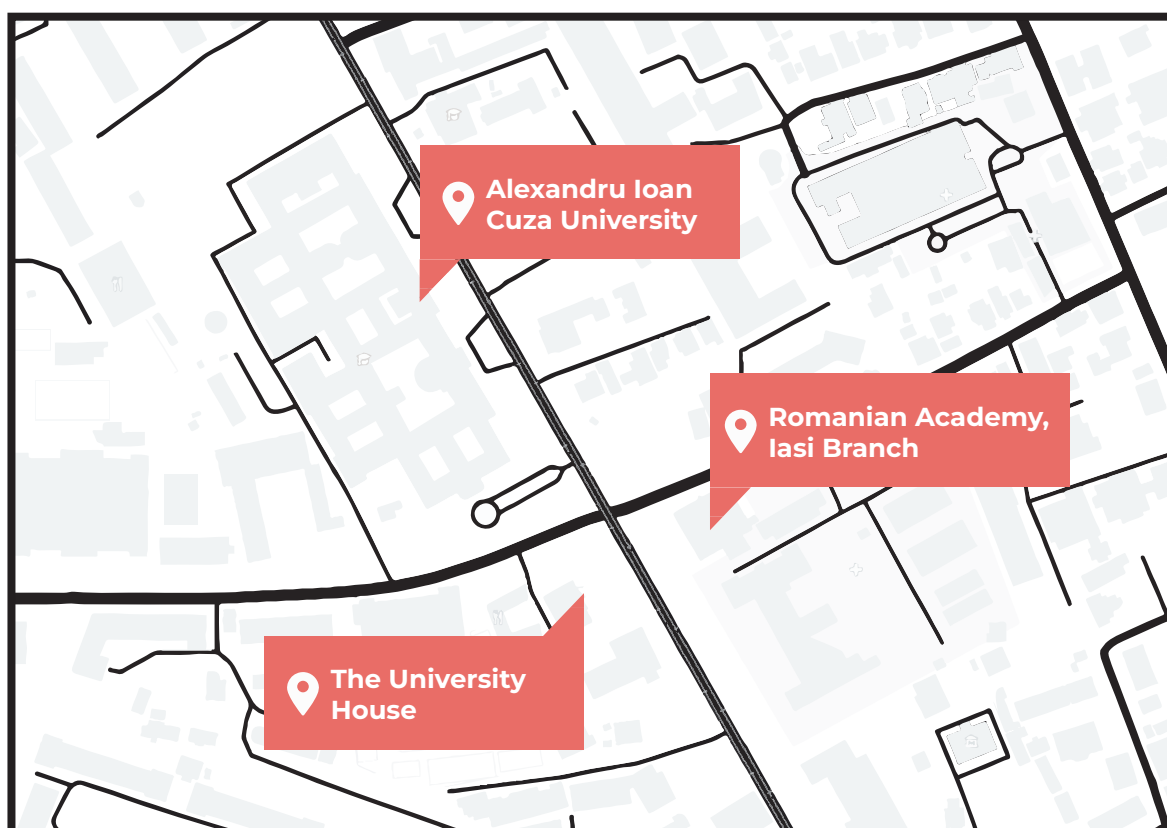


Alexandru Ioan Cuza University (in Romanian: Universitatea "Alexandru Ioan Cuza" din Iasi)

Address: Bulevardul Carol I 11, Iasi 700506



Locations on map:



More info



Useful links:

<https://www.turism-iasi.ro/en/home-en/>

<https://iasi.travel/en/>

<https://romaniatourism.com/iasi.html>



Passport and Visa Information:

Information on visa requirements for entering Romania can be found on the website of the Ministry of Foreign Affairs.

Please check this [link](#) for more information.



Currency

Romanian Leu (pl. Lei) (currency code, RON).

Exchange rates as of December 4th:

1 euro = 4.9770 lei

1 US dollar = 4.7393 lei

Please check this [link](#) for updated information.



Electricity

The standard electric outlet voltage in Romania is 230 volts at a frequency of 50 Hz and the power sockets are F (schuko plug). Participants are expected to have their own adaptor if required and/or any charger (mobile phone, personal laptop etc.).



Time zone

Current local time is GMT+3.



Emergency Calls

In case of emergency, please dial the EU emergency number 112 for Police, Ambulance or Fire Services.



Medical Services

All participants will be responsible for payment of any medical, surgical, dental, hospital or ambulance services that they require.



Local services

Cash machines for major banks operating in Romania are available in the proximity. Several pharmacies are available nearby the bank.

where to stay

HOTELS | Location & distance from conference venues

Click on each hotel to get more info



Contact info



Emergency contact persons

Contact persons:

Alina Botezat | Mobile +40 751 923 254

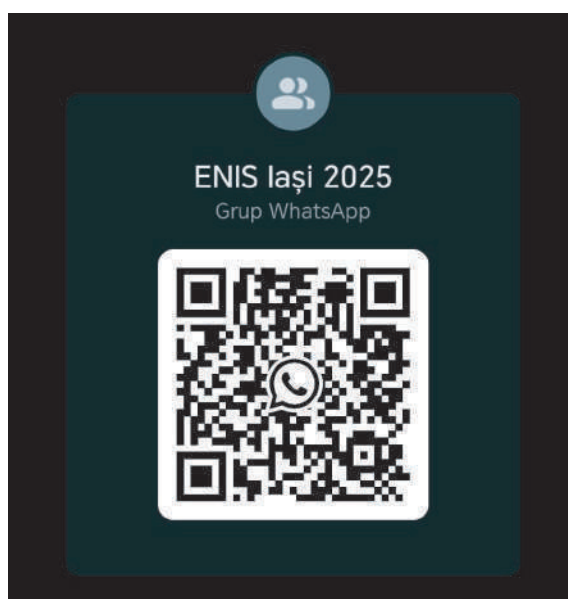
Iolanda Voda | Mobile +40 723 134 636



Whatsapp

ENIS Iași Whatsapp group:

We invite all conference participants to stay informed and connected by joining our official conference WhatsApp group. Simply scan the QR code below to access important updates, announcements, and engage with fellow attendees.



Join us online

day 1 | 04 jun

09:30 - 10:05	Opening ENIS
10:05 - 10:25	Welcome address
10:25 - 10:45	ENIS Awards
10:45 - 11:30	Opening lecture
11:35 - 12:00	Coffee break
12:00 - 13:00	Spotlight session

Join Zoom Meeting

<https://us06web.zoom.us/j/87234834657?pwd=WV7j7pMIUE4Ukbg9MFZzAxT6lyqEPv.1>

Meeting ID: 872 3483 4657

Passcode: 392384

14:30 - 16:00 Session 1.1

Join Zoom Meeting

<https://us06web.zoom.us/j/81821777130?pwd=3G7gVDCC7xPI8p5emtQHDRo8dB9DOh.1>

Meeting ID: 818 2177 7130

Passcode: 247720

Session 1.2

Join Zoom Meeting

<https://us06web.zoom.us/j/89673035699?pwd=dtroJpRNjbKsoFWsyQrDDNIYlpjWYy.1>

Meeting ID: 896 7303 5699

Passcode: 737027

Session 1.3

Join Zoom Meeting

<https://us06web.zoom.us/j/85042842369?pwd=J5F1wXgwua9k3SpHwSiCanzEBY6lai.1>

Meeting ID: 850 4284 2369

Passcode: 463153

Session 1.4

Join Zoom Meeting

<https://us06web.zoom.us/j/86911094403?pwd=6p3ied1bSXW7QRwBdUr0TOcQtmDajG.1>

Meeting ID: 869 1109 4403

Passcode: 133904

16:30 - 18:00 Session 2.1

Join Zoom Meeting

<https://us06web.zoom.us/j/82833388978?pwd=Tmi0eSthpgH5flbYLMazIso8fXMsmf.1>

Meeting ID: 828 3338 8978

Passcode: 495071

Session 2.2

Join Zoom Meeting

<https://us06web.zoom.us/j/83649185708?pwd=o5XaOCeGdgjQMhIboMM8IJdzYbRnH5.1>

Meeting ID: 836 4918 5708

Passcode: 973389

Join us online

day 1 | 04 jun

16:30 - 18:00 Session 2.3

Join Zoom Meeting

<https://us06web.zoom.us/j/83892646933?pwd=DO0fiI6g7B7aRbApNFuokHnnIfcFm6.1>

Meeting ID: 838 9264 6933

Passcode: 106169

Session 2.4

Join Zoom Meeting

<https://us06web.zoom.us/j/82459858297?pwd=VjdVHT4LgxZL9iSjsJehH3M0tcIDdX.1>

Meeting ID: 824 5985 8297

Passcode: 679939

day 2 | 05 jun

09:45 - 10:45 10:45 - 11:30 Workshop Fostering new collaborations

Join Zoom Meeting

<https://us06web.zoom.us/j/81110355816?pwd=B5dXc6udI3INJavtsI8Gc4JDz7RtUg.1>

Meeting ID: 811 1035 5816

Passcode: 564612

12:00 - 13:30 Session 3.1

Join Zoom Meeting

<https://us06web.zoom.us/j/88645224346?pwd=wio9go82KkItIbuCeM6wOZXqW7fWYH.1>

Meeting ID: 886 4522 4346

Passcode: 428764

Session 3.2

Join Zoom Meeting

<https://us06web.zoom.us/j/84157964429?pwd=GZanf0NX8ujnseXzAxKQDp9Exa6Emf.1>

Meeting ID: 841 5796 4429

Passcode: 640892

Session 3.3

Join Zoom Meeting

<https://us06web.zoom.us/j/82778173821?pwd=aelUpRoBthbShvfOYywbF3Evot9F57.1>

Meeting ID: 827 7817 3821

Passcode: 577911

Session 3.4

Join Zoom Meeting

<https://us06web.zoom.us/j/82203049258?pwd=F7lIFvIbPgiAjfBKU4j6Nv3nrRa3GJ.1>

Meeting ID: 822 0304 9258

Passcode: 751626

Join us online

day 2 | 05 jun

14:30 - 16:00 **Plenary session of WG 5**

Join Zoom Meeting

<https://us06web.zoom.us/j/88571934107?pwd=ay6ujepuTtn39RMxx69gaHdWXwGI4X.1>

Meeting ID: 885 7193 4107

Passcode: 123404

day 3 | 06 jun

09:00 - 10:00 **Workshop**
10:15 - 11:45 **Plenary session on**
general thematic
reviews

Join Zoom Meeting

<https://us06web.zoom.us/j/81140054652?pwd=Hz7OK9H5ewpYlQEAbUdyIkXRbyIA5J.1>

Meeting ID: 811 4005 4652

Passcode: 047620

12:15 - 13:00 **Closure Keynote**
13:00 - 13:30 **The future of ENIS**

Join Zoom Meeting

<https://us06web.zoom.us/j/86842883583?pwd=v7uVQYx7qASiSBWO4aksDmUbatbLbd.1>

Meeting ID: 868 4288 3583

Passcode: 492659

15:00 - 16:00 **WG1**

Join Zoom Meeting

<https://us06web.zoom.us/j/81740359550?pwd=PHECcmdDMmnfgU9sizytP82kPRz9VS.1>

Meeting ID: 817 4035 9550

Passcode: 147336

WG2

Join Zoom Meeting

<https://us06web.zoom.us/j/89246085441?pwd=5xfW37laPa9boajLtfllH4Zm3CVrS9.1>

Meeting ID: 892 4608 5441

Passcode: 667518

WG3

Join Zoom Meeting

<https://us06web.zoom.us/j/88526485601?pwd=jYZadUQMHsX7lah6XZWMNKeFWfulpO.1>

Meeting ID: 885 2648 5601

Passcode: 616755

WG5

Join Zoom Meeting

<https://us06web.zoom.us/j/82960818700?pwd=qKHzCsYlORLo0FScZm5dWavkaCGIcZ.1>

Meeting ID: 829 6081 8700

Passcode: 169972

Working Groups

WG1 | Global ISM flows and trends at the macro level

WG2 | Social inequalities in access to and during ISM

WG3 | The social and cultural integration of international students in their host countries

WG4 | The impact of ISM on graduates' careers

WG5 | Connecting research and practice

Acknowledgments

We would like to thank the following people (in alphabetic order) for their support in the organization of the conference:

Adriana Perez-Encinas (Autonomous University Madrid, Spain)
Alina Botezat (Academia Romana Filiala Iasi, Romania)
Ana Iolanda Voda (Alexandru Ioan Cuza University of Iasi, Romania)
Ani Chelishvili (Business and Technology University, Georgia)
Annarita Magliacane (The University Of Liverpool, United Kingdom)
Anne Marie Devlin (University College Cork, Ireland)
Bariş Eriçok (Ordu University, Turkey)
Burcu Koc (Sakarya University, Turkey)
Cecile Steyer (Nantes University, France)
Christof Van Mol (Tilburg University, the Netherlands)
Cristina Sin (Universidade Lusófona, Portugal)
Eero Loonurm (Estonian Education and Youth Board, Estonia)
Elena Ovchinnikova (Università Cattolica del Sacro Cuore, Italy)
Georgiana Mihut (University of Warwick, United Kingdom)
Jannecke Wiers-Jenssen (Nordic Institute for Studies in Innovation, Research and Education, Norway)
John Cullinan (National University of Ireland, Galway, Ireland)
Joyce Aguiar (Centre for Research in Higher Education Policies, Portugal)
Judith Borràs (Universitat de Lleida, Spain)
Lavinia Bejan (Romanian Academy, Iasi Branch)
Lutjona Lula (Qendra ESN AL, Albania)
Mar Cobeña (University of Seville, Spain)
Nannan Lu (Nanyang Technological University, Singapore)
Orlanda Tavares (University of Minho, Portugal)
Per Nilsson (Umeå universitet, Sweden)
Queenie Lam (Independent researcher, Germany)
Runa Gudmarsdottir (Rannís, Iceland)
Sejdi Sejdiu (University "Ukshin Hoti" Prizren, Kosovo)
Sevgi Kaya (Middle East Technical University, Turkey)
Si Huili (University of Manchester, United Kingdom)
Sintija Šmite-Tilika (State Education Development Agency, Latvia)
Sylvie Lomer (University of Manchester, United Kingdom)
Thais França (ISCTE – University Institute Lisbon, Portugal)
Yeşim Özer Özkan (Gaziantep University, Turkey)



European Network on International Student Mobility
Connecting Research and Practice

Want to join the ENIS Network?

[Submit your application here](#)

Follow us



@ENISnetwork



ENIS Cost Action



ENIS Network

This conference programme is based upon the work from COST Action 20115, supported by COST (European Cooperation in Science and Technology)



Funded by
the European Union

 **cost**
EUROPEAN COOPERATION
IN SCIENCE & TECHNOLOGY
www.cost.eu