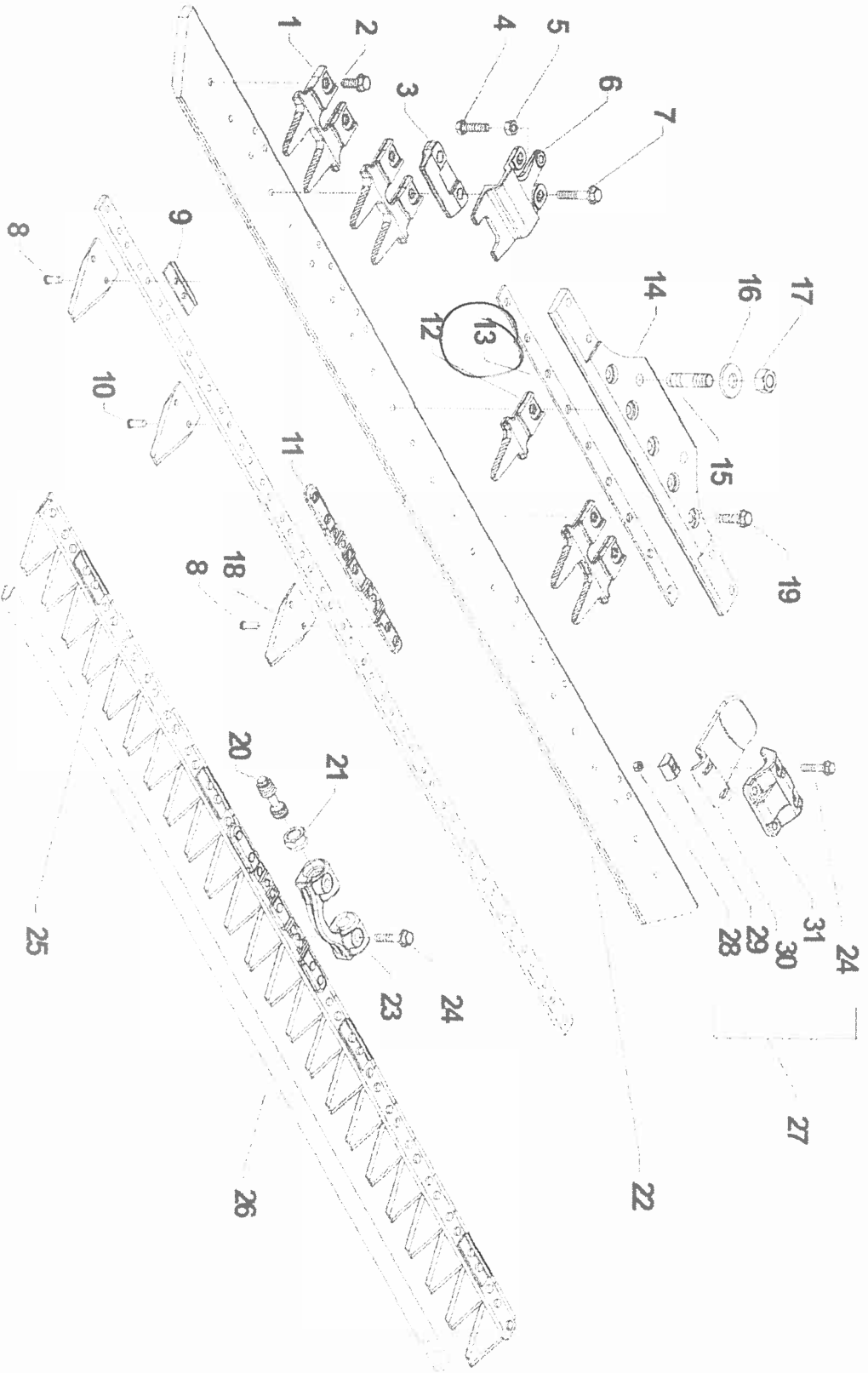




BCS Motor mowers, BCS 2-wheel tractors - CUTTER BARS
013C.03.A0001_00 - BAR "LASER"



Pos.	Id	Qty	Description	Note
1	52458713T	1	DOUBLE FINGER	
2	31112171	1	SCREW TC C/F M8X16 DIN 6921	
3	56358744Z	1	BLADE HOLDER GUIDE FB2011	
4	31112152	1	SCREW TC M8X30 UNI 5739 8G	
5	31211080	1	NUT M8	
6	56359003Z	1	BLANK HOLDER	
7	31112169	1	SCREW TC C/F M8X40 DIN 6921	
8	33126516	1	RIVET TC 6.5X16	
9	56351401	1	SMALL PLATE	
10	33126513	1	RIVET TC 6.5X13	
11	56358708Z	1	BLADE SUPPORT	
12	52458714T	1	SINGLE FINGER	
13	56158735Z	1	CENTRAL SPACER BF2011 GALV	
14	56358736T	1	BAR CONNECTION BF2011	
15	31312141Z	1	STUD BOLT M14X1.5X48X12X20 8G	
16	31421251	1	WASHER	
17	31221151	1	NUT M14X1.5	
18	56358716	1	BLADE SECTION	
19	31112167	1	SCREW TC C/F M8X30 DIN 6921 8G	
20	58058662	1	SCREW FOR BLADE CONNECTION	
21	58058661	1	CONICAL NUT M16X1.5	
22	56358704N	1	CONVEYING CHUTE M.1.15	
22	56358705N	1	CONVEYING CHUTE M.1.35	
22	56358706N	1	CONVEYING CHUTE EU M.1.55 EL.	
22	56358707N	1	CONVEYING CHUTE EU M.1.75 EL.	
22	56358781N	1	CONVEYING CHUTE M.0.80	
22	56358782N	1	CONVEYING CHUTE M.1.00	
23	52158700Z	1	BLADE COUPLING BF2011 ZINC-COATED	
24	31112165	1	SCREW TC C/F M8X35 DIN 6921 8G	

BCS Motor mowers, BCS 2-wheel tractors - CUTTER BARS

013C.03.A0001_00 - BAR "LASER"



Pos.	Id	Qty	Description	Note
25	59058724T	1	BLADE BF2011 M.0.80	
25	59058728T	1	BLADE BF2011 M.1.00-COMLETE	
25	59058739T	1	COMPLETE LASER BLADE M 1.15	
25	59058740T	1	BLADE BF2011 M.1.35	
25	59058742T	1	COMPLETE BLADE 1.75	
25	59058750T	1	COMPLETE LASER BLADE 1.55MT	
26	55259131	1	GUARD	
26	55259132	1	GUARD	
26	55259133	1	CUTTING BAR 1.15 GUARD	
26	55259134	1	CUTTING BAR 1.35 GUARD	
26	55259135	1	CUTTING BAR 1.55 GUARD	
26	55259136	1	GUARD	
27	59258746	1	COMPLETE SLIDE FOR CUTTING BAR	
28	31241085	1	SELFLOCK NUT M8 6S	
29	52158748Z	1	FIXING SLIDE SLITTA BF2011 ZNT	
30	56158749Z	1	SLIDE	
31	52158747Z	1	SUPPORT	



BCS Motor mowers, BCS 2-wheeled tractors - CUTTER BARS
013C.03.A0001_00 - BAR "LASER"